

2100 UT DEED PAGE 111

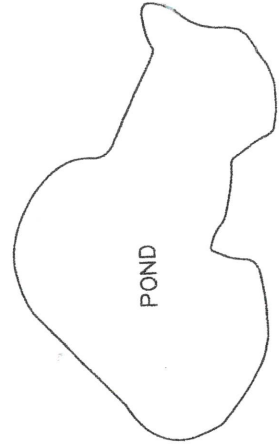
NORTH LINE UNDER LIBER 6257, PAGE 387 1896.18'

ROW MON 10.00 29.00 373.07

SOUTH LINE OF LANDS APPROPRIATED BY N.Y.S.D.O.T. AS SHOWN ON MAP 40 PARCEL 41 RECORDED UNDER LIBER 9378, PAGE 406

EASEMENT GRANTED TO N.Y.S. ELEC. & GAS FOR GUYING FACILITIES 25 SOUTH OF POLE N.Y.S.E&G. 130S RECORDED UNDER LIBER 9322, PAGE 637

EAST LINE UNDER LIBER 6257, PAGE 387



ASPHALT DRIVE

FRAME HOUSE "A"

CHAIN LINK FENCE WITH WATER SLIDE (IN RUINS)

LAKE

OLD TRAILER (IN RUINS)

POST AND RAIL FENCE

FRAME DECK

FRAME BUILDING (IN RUINE)

1403.00

PAVILION

FRAME BUILDING "B"

POST AND RAIL FENCE

CONCRETE

FND REBAR W/CAP WSA

15' WIDE EASEMENT GRANTED TO N.Y.S. ELEC. & GAS AS RECORDED UNDER LIBER 8876, PAGE 463 (EXACT LOC. OF N.Y.S.E&G T-14 UNKNOWN)

PAVILION

PAVILION

EASEMENT GRANTED TO THE NEW YORK STATE GAS CORPORATION UNDER LIBER 7334, PAGE 209 (WOODEN POLE LINE GRANTED TO THE NEW YORK STATE ELEC. & GAS CORP. RECORDED UNDER LIBER 6537, PAGE 314)

Campgrounds (PA)

PAVILION

FRAME BUILDING "C" (SHOWER) POOR CONDITION

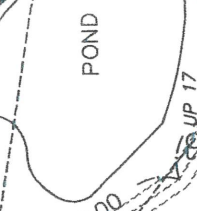
PAVILION

PAVILION

PAVILION

60.5' DEED 58.05' MEAS.

POND



POND

POND

POND

POND

15' WIDE EASEMENT GRANTED TO N.Y.S. ELEC. & GAS AS RECORDED UNDER LIBER 8608, PAGE 45 (EXACT LOC. OF N.Y.S.E&G T-19 UNKNOWN)

NORTH LIBER

TOTAL AREA AS SURVEY =

1937.76' DEED 1930.26' MEAS.

POST 1.48'E

POST 1.25'E

ROW MON

ROW MON

156.00

307.00

COUP 14-1

COUP 14

COUP 14-1

COUP 11A

COUP 11B

COUP 15

COUP 5

COUP 11A

COUP 11B

COUP 15

COUP 16

COUP 17

COUP 13-1

COUP

COUP

COUP

COUP

COUP NYSEG

COUP NYSEG

COUP NYSEG

COUP NYSEG

COUP NYSEG 888

COUP

COUP

COUP

COUP

COUP

COUP

COUP

COUP

COUP

COUP

COUP

COUP

COUP

COUP

COUP

COUP

COUP

COUP

COUP

COUP

COUP

COUP

COUP

COUP

COUP

COUP

COUP

COUP

COUP

COUP

COUP

COUP

COUP

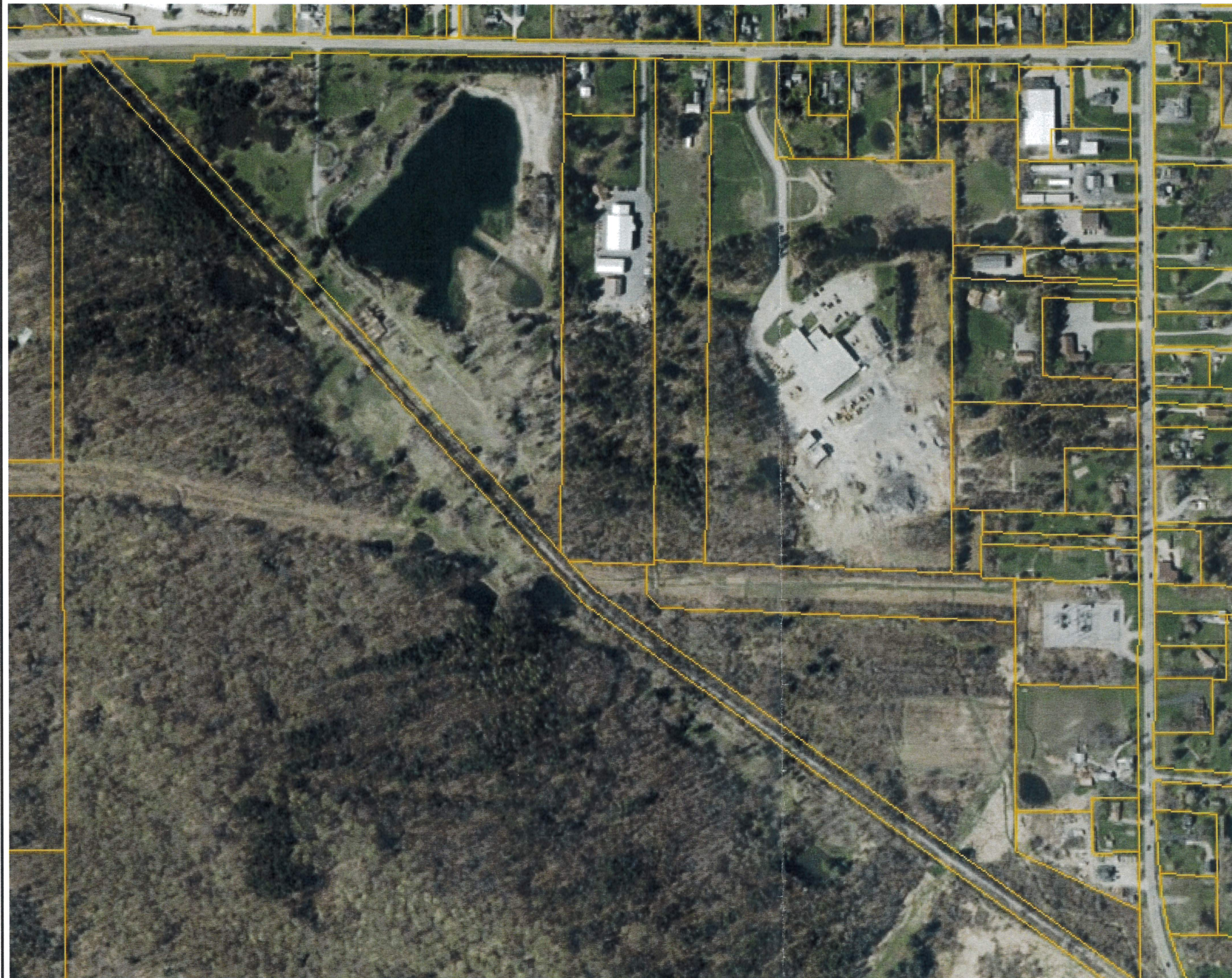
COUP

COUP

COUP



Erie County On-Line Mapping Application



Legend

 Parcels

0 0.14 0.3 Miles

WGS_1984_Web_Mercator_Auxiliary_Sphere
THIS MAP IS NOT TO BE USED FOR NAVIGATION

ERIE COUNTY
DEPARTMENT OF ENVIRONMENT & PLANNING
OFFICE OF GIS

This map is a user generated static output from an Internet mapping site and is for reference only. Data layers that appear on this map may or may not be accurate, current, or otherwise reliable.

1: 9,028

