

WS-1

Warning Electrical Services

431 Clear Road • East Aurora, NY 14052

November 6, 2014

Bill-It
Jeff Higgins
300 Gleed Avenue
East Aurora, NY 14052

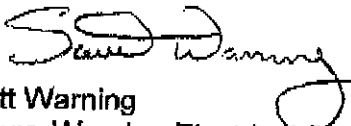
Dear Jeff,

As discussed, I am enclosing a rough estimate for your generator installation. This estimate is based off a somewhat similar installation we completed a few years ago in Orchard Park. My Orchard Park installation included gas and electric runs that were within 20' of the unit placement.

Once the Town of Aurora has approved the generator placement, I will need to do another site visit to figure the added costs of your gas and electric runs. It is impossible to predict these costs at this time.

Please do not hesitate to contact me if you require further clarification on this estimate. I am available, if necessary, to join you at the November 18th Board meeting.

Sincerely,



Scott Warning
Owner, Warning Electrical Services, Inc.

Enclosure



Warning Electrical Services

431 Glead Road • East Aurora, NY 14052

November 6, 2014

Bill-It
Jeff Higgins
300 Glead Avenue
East Aurora, NY 14052
687-2645

This rough estimate is for installing a 40kw generator unit. We will provide the following:

- Provide and install 40kw *Cummins NorthEast*[®] standby generator. See attached.
- Provide 12' x 8' stone pad.
- Provide all equipment necessary to set and level unit.
- Provide all 3phase electrical wiring and mounting of indoor 100amp transfer switch sub-panel.
- Tie customer's existing circuitry into sub-panel. We will ensure room for miscellaneous future circuits.
- Once unit location is verified, a firmer estimate will be offered based on lengths of gas and electric runs.
- All work inspected. Electrician will set up all appointments with Electrical Inspector.
- After installation we will walk through unit with customer and explain generator system.

NOTE: Existing natural gas lines/meters need to be evaluated before a standby generator is installed. Call National Fuel at 1-800-365-3234 to begin the investigation process. In some cases, a field visit and/or upgrade will be necessary. The customer is responsible for these costs.

NOTE: We will arrange for any necessary electrical inspections, which are included in our estimate. Additional permits and/or inspections may be required.

NOTE: This estimate is valid for (30) days. Due to unforeseen price increases in raw material, acceptance of this estimate beyond (30) days may require Warning Electrical Services, Inc. to re-evaluate our estimate.

NOTE: All accounts not paid after thirty (30) days will be charged 1.5% carrying charge, 18% annualized. The customer is responsible for collection costs, including reasonable attorney's fees.

NOTE: We will need to shut down power, approximately 3-4hours, while we are transferring new lines into existing panel. Estimate based on normal business hours.

Rough Estimate (labor, material & inspection): **\$33,500.00***

*not including option below

OPTION:

-Depending on Town of Aurora requirements, a quieter sound shield may be required:

- 78 Db [at 23' distance] is standard
- 65 Db [at 23' distance], add \$2512.12

Payment Plan:

50% deposit is required before unit will be ordered.

Balance due when completed and inspected.

If this estimate is agreed to and accepted, please sign one copy and return to Warning Electrical Services, Inc. along with your deposit.

Bill-It



Scott Warning, Warning Electrical Services, Inc.

Date

11-10-14
Date

SUPERVISOR
JOLENE M. JEFFE
(716) 652-7590



WS-2

TOWN OF AURORA
5 South Grove Street, East Aurora, NY 14052
www.townofaurora.com

TOWN COUNCIL MEMBERS

November 11, 2014

Jeffrey T. Harris
jharris@townofaurora.com

To: Town Board Members

James F. Collins
jcollins@townofaurora.com

I respectfully request authorization to attend the 2015 Association of Towns elected officials Training school in New York City from February 15-28 2015.

James J. Bach
jbach@townofaurora.com

This will be paid out of A5010.404 Expense & Travel. Below are the estimated expenses for the training.

Susan A. Friess
sfriess@townofaurora.com

Registration: \$100.00
Hotel: \$235.00
Transportation: \$113.40 round trip via Amtrak

SUPT. OF HIGHWAYS

David M. Gunner
(716) 652-4050
highway@townofaurora.com

This will be paid for after January 1, 2015 from the 2015 budget.

RECEIVER OF TAXES

Barbara Halt
(716) 652-7596
tax@townofaurora.com

Sincerely,

A handwritten signature in black ink, appearing to read "David M. Gunner".

David M. Gunner
Superintendent of Highways

SUPT. OF BUILDING

Patrick J. Blizniak
(716) 652-7591
building@townofaurora.com

ASSESSOR

Thelma Hornberger
assessor@townofaurora.com
(716) 652-0011

DIR. OF RECREATION

Peggy M. Cooke

2015 Training School & Annual Meeting

February 15 - 18, 2015



Hotel Room Rate Information

Please register online through our Web site: www.nytowns.org and follow the links. If you register via mail, use the form on the following page.

ATTENDEES MUST REGISTER WITH THE ASSOCIATION OF TOWNS BEFORE MAKING HOTEL ACCOMMODATIONS.

We have contracted with the hotels listed below for special Training School rates. In order to keep meeting costs to a minimum, the Association has entered into a contract with the Hilton Midtown and Sheraton NYTimes Square. If you choose to make your sleeping room reservations outside of the Association's group block, such as through an Internet reservation system or with a discount coupon, the Association can suffer significant financial penalties.

HOTEL	HILTON MIDTOWN	SHERATON NYTIMES SQUARE
ADDRESS	1335 Avenue of the Americas (6th Ave. & 53rd St.)	811 7th Avenue (7th Ave. at 52nd St.)
CUT-OFF DATE	Jan. 9, 2015	Jan. 23, 2015
SINGLE	\$265	\$235 (plus \$30 for each add'l person)
DOUBLE	\$285	\$235 (plus \$30 for each add'l person)
TRIPLE	\$305	
QUAD	\$325	
EXECUTIVE/CLUB*	\$285 Single \$325 Triple \$305 Double \$345 Quad Based on Availability*	\$285 Single \$285 Double (plus \$30 for each add'l person)
SUITES	Singles or Doubles are available Please call 1(800) HILTONS (445-8667) for rates.	1 Bedroom - Single/Double \$575 2 Bedroom - Single/Double \$750
*Check-in for the Executive Tower Rooms at the Hilton is in the Main Lobby of the Hotel **Check-in for the Club Tower Rooms at the Sheraton is at the main check-in desk on the lobby level		

NOTE: Rooms will be automatically released after the cut-off dates and additional reservations or changes will be subject to availability.

All reservations must be guaranteed by a major credit card. Room cancellations within 72 hours of reservation date and "no-shows" will result in a penalty of one night's room charge.

Hotels will accept only credit cards for the one-night deposit; they will not accept personal checks or vouchers for deposits. Vouchers can be used for check out. ** Please Note: FOR THE HILTON ONLY, a one-night deposit will be charged to your credit card immediately upon making your reservation.

Questions? Please contact Executive Meeting Coordinator Patty Kebea at the Association offices at 518-465-7933.

SUPERVISOR
James J. Bach
(716) 652-7590
jbach@townofaurora.com



townc

WS-3

TOWN OF AURORA
Southside Municipal Center
300 Glead Avenue, East Aurora, NY 14052
www.townofaurora.com

TOWN COUNCIL MEMBERS

November 11, 2014

Susan A. Friess
sfriess@townofaurora.com

Jeffrey T. Harris
jharris@townofaurora.com

Jolene M. Jeffe
jjeffe@townofaurora.com

Charles D. Snyder
csnyder@townofaurora.com

SUPT. OF HIGHWAYS
David M. Gunner
(716) 652-4050
highway@townofaurora.com

SUPT. OF BUILDING
Patrick J. Blizniak
(716) 652-7591
building@townofaurora.com

ASSESSOR
Richard L. Dean
assessor@townofaurora.com
(716) 652-0011

DIR. OF RECREATION
Peggy M. Cooke
(716) 652-8866
peggy@townofaurora.com

TOWN ATTORNEY
Ronald P. Bennett

TOWN JUSTICE
Douglas W. Marky
Jeffrey P. Markello

HISTORIAN
Robert L. Goller
(716) 652-7944
historian@townofaurora.com

FAX: (716) 652-3507
NYS Relay Number:
1(800) 662-1220

To: Town Board Members

I respectfully request the Town Board authorize the purchase of a 2015 Ford Explorer for \$27021.91. This will be paid for out of the 2015 budget line DB5130.217 upon delivery in 2015. This is being bought through New York State Contract PC66390/Award 22737 Lot 2 Item 9. The winning bidder is Henderson Ford of Webster, NY.

Sincerely,

A handwritten signature in black ink, appearing to read "D. Gunner", written over a large, loopy scribble.

David M. Gunner
Superintendent of Highways

HENDERSON



2015 Ford Explorer

4dr 4x4 Base (K8B)



PC66390/Award 22737

Lot II Item 9

MSRP: \$33,540

NYS OGS Contract Price: \$27,021.91

Option Discount: 10%

Prepared For
State of New York Executive Department
Office of General Services
PSG Corning Tower - 38th Floor
Albany, New York, 12242
Phone: 518-474-6920

Prepared By
Henderson Ford
Minority-Owned Business Enterprise File ID # 54544
810 Ridge Road, Webster, NY, 14580
Phone: 585-787-1700
Fax: 888-533-1632
fleet@hendersonfamilyford.com

2015 Ford Explorer 4dr 4x4 Base (K8B)

Engine: 3.5L Ti-VCT V6

Transmission: 6-Speed SelectShift Automatic

Exterior (0 P) Oxford White

Interior (0 I) Medium Light Stone



Standard Equipment

Items Featured Below are included at NO EXTRA CHARGE in the Standard Vehicle Price Shown at Right

- 3.5L V-6 DOHC w/SMPI 290hp
- 6 speed automatic trans w/OD
- 4-wheel ABS
- Brake assistance
- Traction control
- P245/60R18 BSW AS H-rated tires
- Battery with run down protection
- Advance Trac w/Roll Stability Control
- Air conditioning
- AM/FM/Satellite-prep single CD, MP3 decoder
- Rear child safety locks
- Dual power remote mirrors
- Variable intermittent wipers
- Painted aluminum wheels
- Dual front airbags
- Driver & front passenger seat mounted side airbags
- Airbag occupancy sensor
- SecuriLock immobilizer
- Rear window defogger
- Tachometer
- Message center
- Underseat ducts
- Reclining front bucket seats
- 60-40 folding 2nd row split-bench seat
- 50-50 folding 3rd row split-bench seats
- Audio control on steering wheel

STANDARD VEHICLE PRICE

OPTIONAL EQUIPMENT

- Equipment Group 100A N/C
- California Emissions System N/C
- Engine: 3.5L Ti-VCT V6 N/C
- Transmission: 6-Speed SelectShift INC
- Automatic
- 3.65 Axle Ratio INC
- GVWR: 6,160 lbs INC
- Tires: P245/60R18 AS BSW INC
- Wheels: 18" Painted Aluminum INC
- Cloth Bucket Seats INC
- 113" Wheelbase STD
- Radio: AM/FM Stereo w/Single CD/MP3 INC
- Capable
- Daytime Running Lamps \$45.00
- Interior : Medium Light Stone N/C
- Primary : Oxford White N/C

\$32,600.00



CITY MPG
17

HIGHWAY MPG
23

Accessories and Incentives \$0.00

SUBTOTAL \$32,645.00

Destination \$895.00

TOTAL \$33,540.00

2015 Ford Explorer

VEHICLE PROFILE

HENDERSON



Powertrain

3.5L V-6 DOHC SMPI 24 valve engine with variable valve control * 175 amp alternator * 650 amp 58 amp hours (Ah) battery with run down protection * 6-speed electronic SelectShift automatic transmission with overdrive, lock-up * Automatic full-time four-wheel drive with electronic transfer case shift, auto locking hubs * Terrain Management System ABS & driveline traction control * 3.65 axle ratio * Stainless steel exhaust with tailpipe finisher

Steering and Suspension

Electric power-assist rack and pinion steering with speed-sensing assist * 4-wheel disc brakes with front and rear vented discs * AdvanceTrac w/Roll Stability Control electronic stability control with anti-roll * Independent front suspension * Front strut suspension * Front anti-roll bar * Front coil springs * Gas-pressurized front shocks * Rear independent suspension * Rear multi-link suspension * Rear anti-roll bar * Rear coil springs * Gas-pressurized rear shocks * Front and rear 18.0" x 7.50" painted aluminum wheels with full wheel covers * P245/60HR18.0 BSW AS front and rear tires * Inside under cargo mounted compact steel spare wheel

Safety

4-wheel anti-lock braking system * Daytime running lights * Center high mounted stop light * Dual airbags, seat mounted driver and passenger side-impact airbags, Safety Canopy System curtain 1st, 2nd and 3rd row overhead airbag, airbag occupancy sensor, passenger knee airbag * Front height adjustable seatbelts with front pretensioners * SecuriLock immobilizer, panic alarm

Comfort and Convenience

Air conditioning, rear HVAC with separate controls, air filter, underseat ducts, auxiliary rear heater, headliner/pillar ducts * AM/FM/Satellite-prep, seek-scan, in-dash mounted single CD, MP3 decoder, 6 speakers, speed sensitive volume, integrated roof antenna, radio steering wheel controls * 2 1st row LCD monitors * Cruise control with steering wheel controls * Power door locks with 2 stage unlock, keyfob (all doors) keyless entry, child safety rear door locks, tailgate/rear door lock included with power door locks * 4 12V DC power outlets, driver foot rest, retained accessory power * Analog instrumentation display includes tachometer, engine temperature gauge, in-dash clock, exterior temp, systems monitor, trip computer, trip odometer * Warning indicators include oil pressure, engine temperature, battery, lights on, key, low fuel, low washer fluid, door ajar, trunk/liftgate ajar, service interval, brake fluid, low tire pressure * Steering wheel with tilt and telescopic adjustment * Power front and rear windows with deep tint, driver 1-touch down, fixed rearmost windows * Variable intermittent front windshield wipers, sun visor strip, fixed interval rear wiper with heated wiper park, rear window defroster * Dual vanity mirrors * Day-night rearview mirror * Interior lights include dome light with fade, front and rear reading lights, illuminated entry * Full floor console with covered storage, full overhead console with storage, locking glove box with light, front and rear cupholders, 2 seat back storage pockets, driver and passenger door bins, rear door bins * Carpeted cargo floor, plastic trunk lid/rear cargo door, cargo tie downs, cargo light

Seating and Interior

Seating capacity of 7 * Bucket front seats with adjustable head restraints, center armrest * 8-way adjustable (6-way power) driver seat includes lumbar support * 4-way adjustable passenger seat * 60-40 folding split-bench 2nd row seat with tumble forward, reclining 3 fixed rear head restraints * 3rd row seat 50-50 folding split-bench fold into floor with fold into floor, 2 fixed 3rd row head restraints * Cloth faced front seats with cloth back material

2015 Ford Explorer

VEHICLE PROFILE

HENDERSON



Seating and Interior continued

* Cloth faced rear seats with carpet back material * Cloth faced 3rd row seats with carpet back material * Cloth door trim insert, full cloth headliner, full carpet floor covering with carpet front and rear floor mats, metal-look instrument panel insert, leatherette gear shift knob, metal-look door panel insert, metal-look console insert, chrome and metal-look interior accents

Exterior Features

Rear lip spoiler, side impact beams, galvanized steel/aluminum body material * Black bodyside cladding, black wheel well trim molding * Black side window moldings, black front windshield molding * Black door handles * Gray grille * 4 doors with liftgate rear cargo door * Trailer sway control * Driver and passenger power remote black convex spotter folding outside mirrors * Front and rear body-colored bumpers with black rub strip/fascia accents * Projector beam halogen fully automatic headlamps with delay-off feature * Clearcoat monotone paint

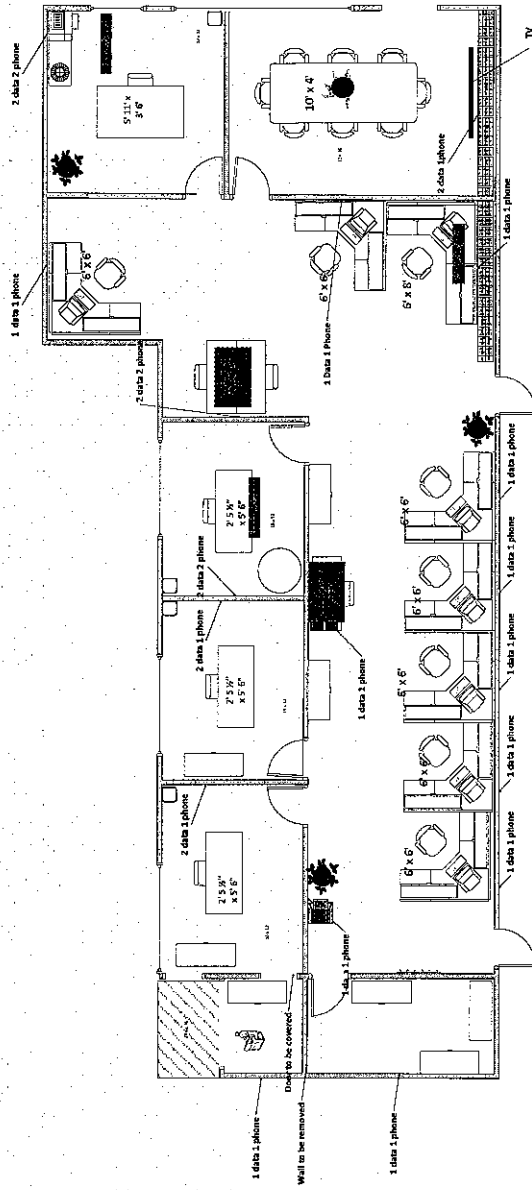
Warranty

Basic	36 month/36,000 miles	Powertrain	60 month/60,000 miles
Corrosion Perforation	60 month/unlimited mileage	Roadside Assistance	60 month/60,000 miles
Accessories	36 month/36,000 miles		

Dimensions and Capacities

Output	290 hp @ 6,500 rpm	Torque	255 lb.-ft. @ 4,000 rpm
1st gear ratio	4.484	2nd gear ratio	2.872
3rd gear ratio	1.842	4th gear ratio	1.414
5th gear ratio	1.000	6th gear ratio	0.742
Reverse gear ratio	2.882	Curb weight	4,610 lbs.
GVWR	6,160 lbs.	Front GAWR	3,080 lbs.
Rear GAWR	3,300 lbs.	Towing capacity	2,000 lbs.
Front legroom	40.6 "	Rear legroom	39.8 "
Third legroom	33.2 "	Front headroom	41.4 "
Rear headroom	40.5 "	Third headroom	37.8 "
Front hiproom	57.3 "	Rear hiproom	56.7 "
Third hiproom	40.7 "	Front shoulder room	61.3 "
Rear shoulder room	61.0 "	Third shoulder room	50.8 "
Passenger area volume	151.7 cu.ft.	Length	197.1 "
Body width	78.9 "	Body height	71.0 "
Wheelbase	112.6 "	Axle to end of frame	46.5 "
Front tread	67.0 "	Rear tread	67.0 "
Turning radius	19.4 '	Fuel tank	18.6 gal.
Interior cargo volume	21.0 cu.ft.	Interior cargo volume seats folded	43.8 cu.ft.
Interior maximum cargo volume	80.7 cu.ft.		

WS-4



WS-5

TOWN OF AURORA
300 GLEED AVENUE, EAST AURORA, NY 14052

BUILDING DEPARTMENT
(716) 652-7591
FAX (716) 652-3507

MEMO

TO: Supervisor Bach and Town Board
FROM: Patrick Blizniak, Superintendent of Buildings
DATE: November 12, 2014

=====

I respectfully request approval to purchase a winter jacket, bib overalls, ski mask, gloves and boots for Dan Hochadel's outdoor work at Southside Municipal Center. The cost would be approximately \$300 and the gear would be purchased at Aurora Outfitters.



Allied Mechanical

1111 Niagara Street
Buffalo, NY 14213
716-882-1234 Fax 716-882-1010

WS-6

To: TOWN OF AURORA
300 GLEED AVE.
ATTN: ACCOUNTS PAYABLE
EAST AURORA, NY 14052

QUOTATION

No 0000056025

Date Nov11/14

Our Refer.

Cust. Code: AURORA

Start Date Nov11/14

Est End Date

Job Location:TOWN OF AURORA
300 GLEED AVE.
EAST AURORA, NY 14052

We are pleased to submit our quotation for the following work:

QUOTE FOR REPAIRS FOUND NEEDED DURING PLANNED MAINTENANCE:
RTU #5 A#8417-NEED TO REPLACE BOTH SHAFT BEARINGS.
RTU #22 A#9676-NEED TO REPLACE BAD GAS VALVE.
RTU #6 A#8418-NEED TO REPLACED BAD INDUCER MOTOR.
RTU #2 A#9677-NEED TO REPLACE BENT BLOWER WHEEL.
RTU #3 A#8416-NEED TO REPLACE BAD INDUCER MOTOR.
RTU #15 A#8427-NEED TO REPLACE HEAT EXCHANGER, INDUCER MOTOR, INDUCER WHEEL, IGNITOR, FLAME SENSOR, AND BOTH SHAFT BEARINGS.
RTU #16 A#8430-NEED TO REPLACE HEAT EXCHANGER, IGNITOR, FLAME SENSOR AND BOTH SHAFT BEARINGS.

Quoted by Karen B

LABOR	Qty	Price	Total
SERVICE TECH	42.00 Hrs @	72.00	3,024.00
SERVICE TECH	12.00 Hrs @	72.00	864.00
MATERIALS	Qty	Price	Total
BEARING	4.00	105.36 E	421.44
SPARK IGNITOR	2.00	51.96 E	103.92
FLAME SENSOR	2.00	32.64 E	65.28
FLAME SENSOR WIRE	2.00	27.74 E	55.48
VENT MOTOR	1.00	299.16 E	299.16
BLOWER WHEEL	1.00	59.68 E	59.68

*** Continued Page 1 ***

Allied Mechanical

1111 Niagara Street
Buffalo, NY 14213
716-882-1234 Fax 716-882-1010

To: TOWN OF AURORA
300 GLEED AVE.
ATTN: ACCOUNTS PAYABLE
EAST AURORA, NY 14052

Job Location: TOWN OF AURORA
300 GLEED AVE.
EAST AURORA, NY 14052

QUOTATION
No 0000056025
Date Nov11/14

Our Refer.
Cust. Code: AURORA

Start Date Nov11/14
Est End Date

We are pleased to submit our quotation for the following work:

HEAT EXCHANGER	1.00	1,265.73 E	1,265.73
BLOWER WHEEL	1.00	758.92 E	758.92
GAS VALVE	1.00	177.70 E	177.70
TRUCK CHARGE	1.00	40.00 E	40.00
			<hr/> 3,247.31

*** Continued Page 2 ***

Subtotal	7,135.31
Tax 2	0.00
Total Quotation	<hr/> 7,135.31