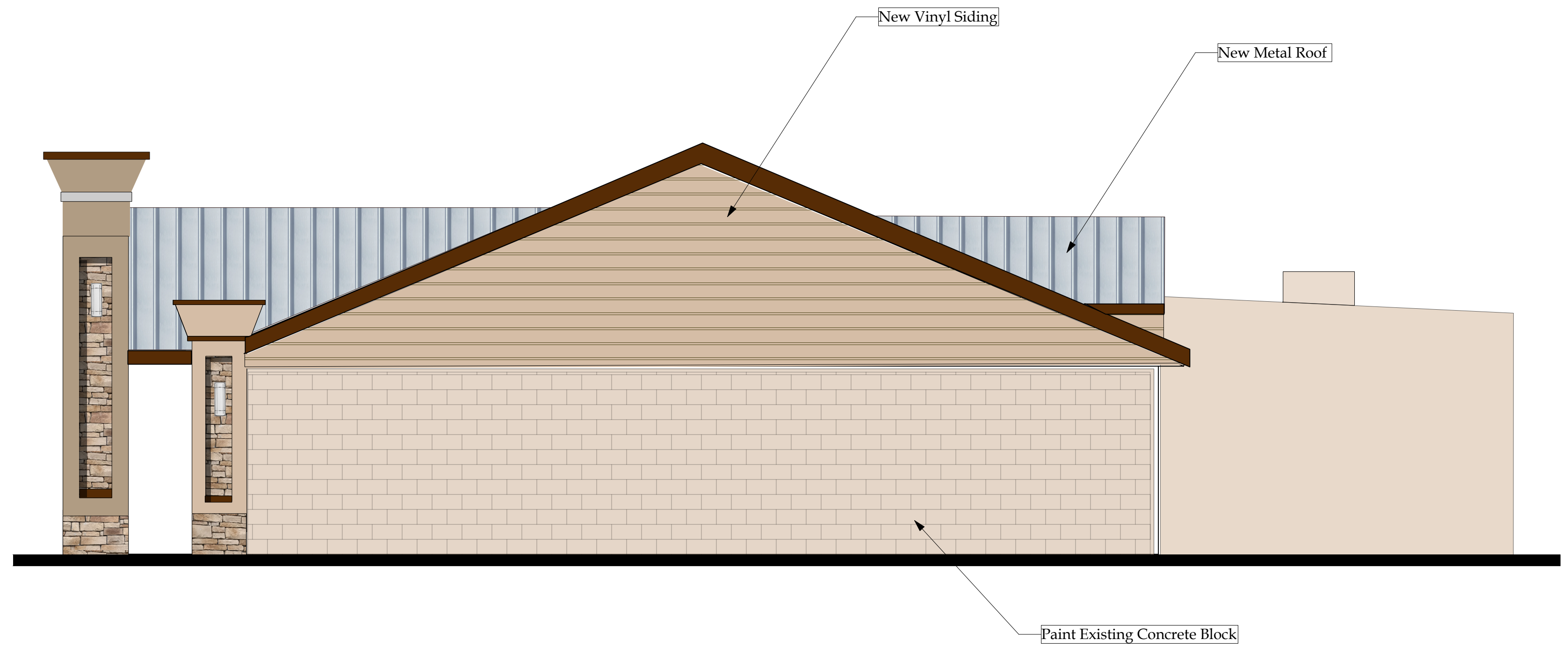
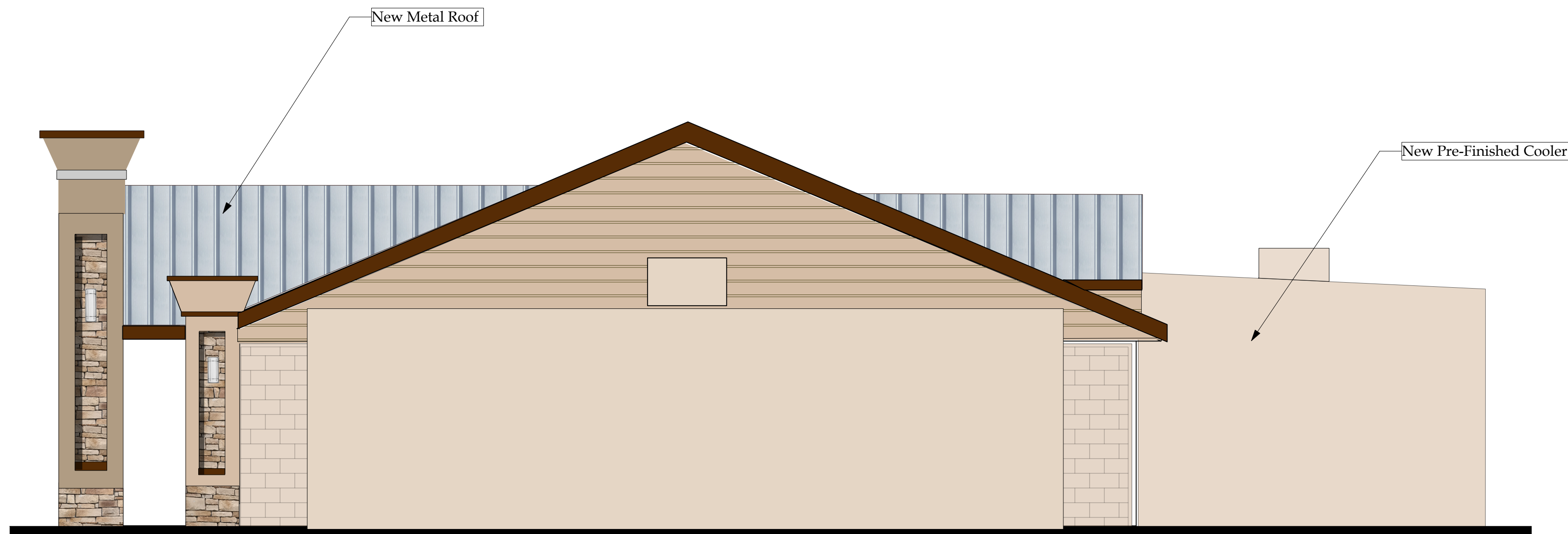


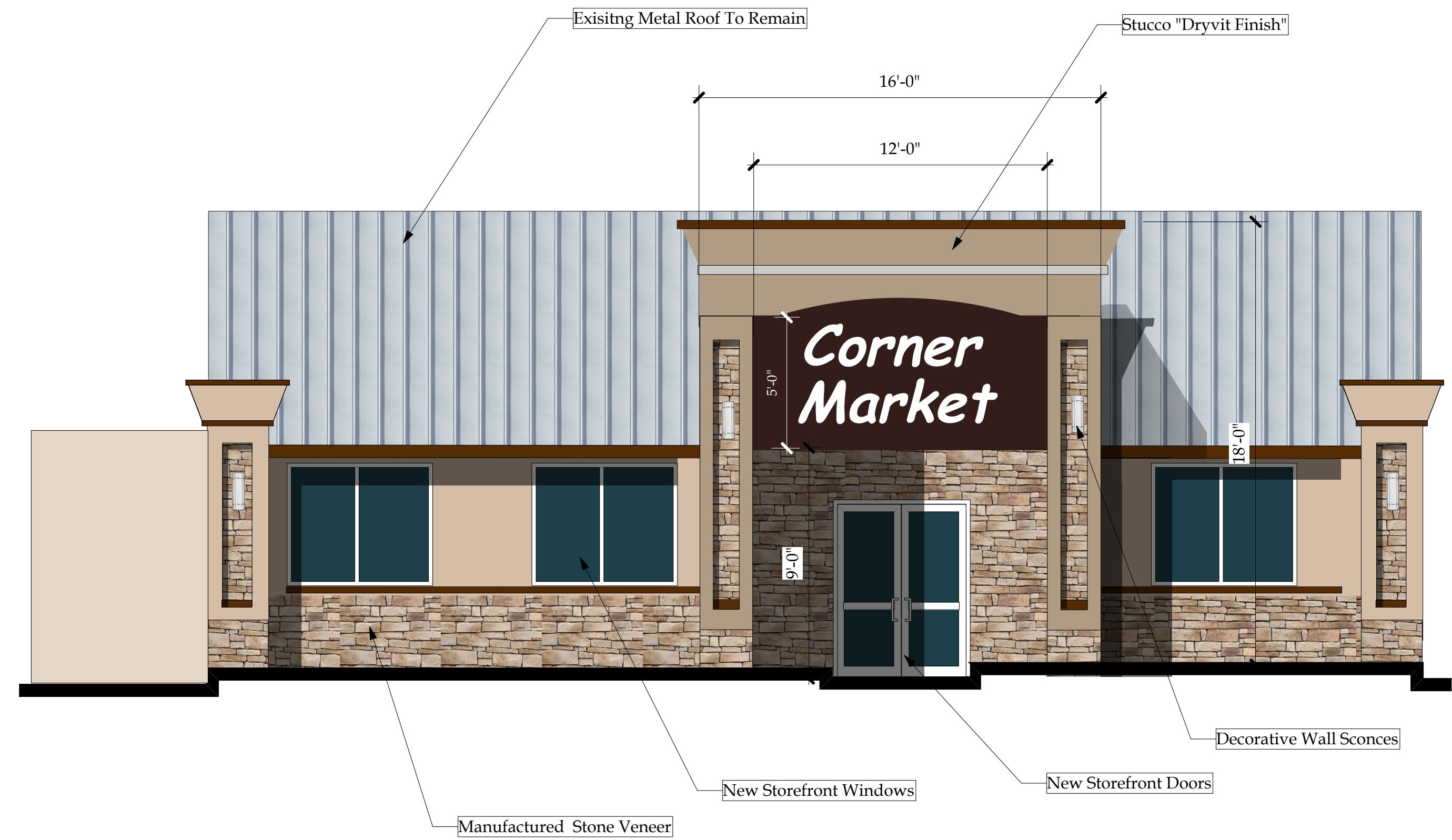
3 Proposed West Elevation  
Scale: 1/4" = 1'-0"



2 Proposed North Elevation  
Scale: 1/4" = 1'-0"



4 Proposed South Elevation  
Scale: 1/4" = 1'-0"



1 Proposed East Elevation  
Scale: 1/4" = 1'-0"

NO	REVISIONS DESCRIPTION	DATE

DRAWN BY: K1  
CHECKED BY: K1