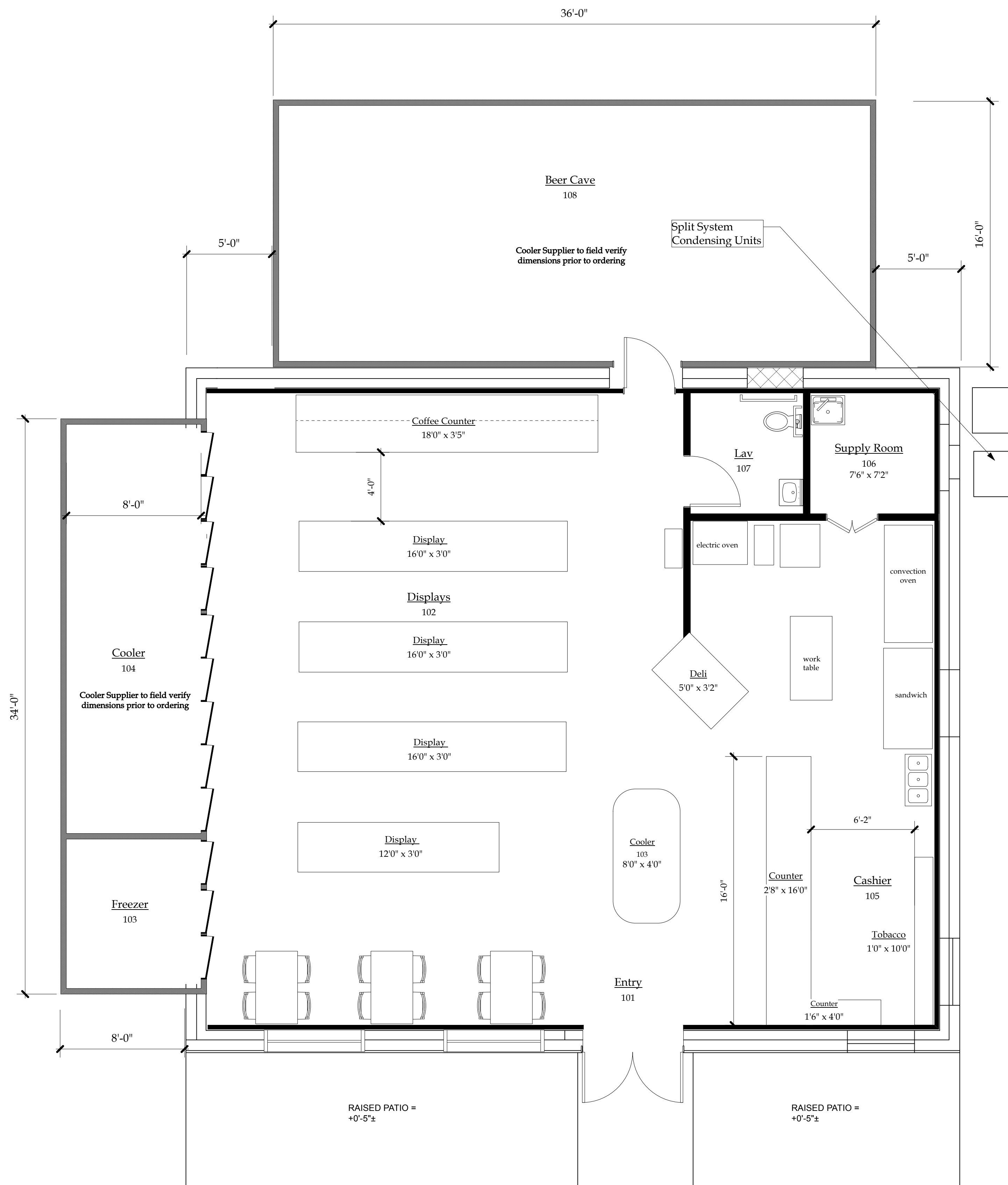




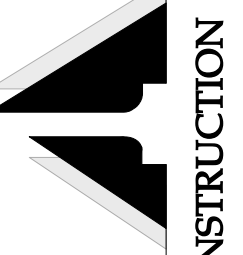
2 Proposed Rendering  
Scale: 1/4" = 1'-0"



1 Proposed Floor Plan  
Scale: 1/4" = 1'-0"

K1 Architecture PLLC

Robert F. Kasprzak, AIA  
716-908-1755  
567 Exchange Street  
Suite 403  
Buffalo, New York 14210



Corner Market  
1045 Davis Road  
West Falls, NY 14170

These documents and their contents are the property of K1 Architecture PLLC and are issued only for the specific project noted on this drawing. We warrant that the work was prepared in accordance with the provisions of Section 2309, Subdivision 2 of the New York State Education Law for any person, unless otherwise noted. The Architect or Professional Engineer shall not be held responsible for any errors or omissions in any way, plans or specifications or reports to which the seal of a Licensed Architect or Professional Engineer has been approved.

REVISIONS

NO	DESCRIPTION	DATE

DRAWN BY: K1  
CHECKED BY: K1

DOCUMENT STATUS:

PLANNING BOARD  
 PERMIT SET  
 BID SET  
 BUDGET PLANS  
 FINAL FOR CONSTRUCTION

**Floor Plan**  
**A-1**  
JOB NO. 2022-09

DATE: January 17, 2023