

SURVEY NOTES - THE GOW SCHOOL

BOUNDARY AND TOPOGRAPHIC INFORMATION WAS TAKEN FROM THE FOLLOWING:
 TITLE: TOPOGRAPHIC SURVEY PREPARED FOR A PORTION OF THE LANDS OF THE GOW SCHOOL, TOWN OF AURORA, COUNTY OF ERIE STATE OF NEW YORK, PREPARED BY JACOBS LAND SURVEYING, 8553 WEST ROAD, MANSVILLE, NY 13429, TEL: (315)435-7114, DATED FEBRUARY 25, 2022.

MAP REFERENCES:
 1) TOPOGRAPHIC SURVEY FOR THE GOW SCHOOL, TOWN OF WALES, COUNTY OF ERIE STATE OF NEW YORK, PREPARED BY NUSBAUMER & CLARKE, INC. DATED FEBRUARY 22, 1988.
 2) PART OF L. 2, 78, 66' TOWN OF AURORA, COUNTY OF ERIE STATE OF NEW YORK, PREPARED BY PAUL G. FAGANO, PLS. DATED NOVEMBER 28, 2018.

MAP NOTES:
 1) UNDERGROUND FACILITIES, STRUCTURES AND UTILITIES HAVE BEEN PLACED ON THIS DRAWING FROM FIELD LOCATIONS, WHERE VISIBLE RECORD DRAWINGS PROVIDED TO THE UNDERSIGNED, AND ALSO FROM DISCUSSIONS WITH THE DIRECTOR OF FACILITIES. LOCATIONS SHOULD BE CONSIDERED APPROXIMATE ONLY. THERE MAY BE OTHER FACILITIES OR UTILITIES, THE EXISTENCE OF WHICH ARE NOT KNOWN FOR THIS REASON. LPO SHALL BE CONTACTED A MINIMUM OF 48 HOURS PRIOR TO ANY UNDERGROUND EXCAVATION.
 2) ELEVATIONS SHOWN ARE TIED TO THE NORTH AMERICAN VERTICAL DATUM OF 1988 (NAVD 88). ELEVATIONS ARE BASED ON FIELD MEASUREMENTS. CONTOURS ARE MERELY INTERPOLATION AND SHOULD BE CONSIDERED AS SUCH ONLY.
 3) THIS SURVEY WAS PREPARED WITHOUT THE BENEFIT OF AN UPDATED ABSTRACT OR TITLE REPORT AND IS THEREFORE SUBJECT TO ANY EASEMENTS, COVENANTS, OR RESTRICTIONS OF RECORD OF ANY FACTS SUCH DOCUMENTS WOULD DISCLOSE.
 4) THERE WAS APPROXIMATELY 4 INCHES OF SNOW COVER AND 3 FOOT SNOW BANKS AT THE TIME OF THE FIELD SURVEY. THERE MAY BE SITE FEATURES NOT SHOWN ON THIS SURVEY DUE TO SNOW COVER.

BENCHMARKS:
 BM-1: CHISELED 'X' MARK ON TOP OF CONCRETE PAD AT SOUTHWEST CORNER LOCATED AT NORTHWEST CORNER OF ORTON HALL. ELEV. = 926.41

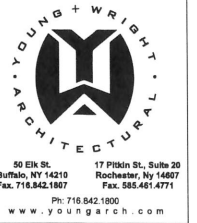
SURVEY VERIFICATION/COORDINATION - THE GOW SCHOOL

CONTRACTOR IS RESPONSIBLE FOR VERIFICATION / COORDINATE OF ALL INFORMATION (BENCHMARKS, ELEVATIONS, UTILITIES, ELEMENTS, TREES, ETC.) SHOWN ON THIS SURVEY AND CALIBRATING THIS INFORMATION WITH ACTUAL "IN THE FIELD" DATA. THIS SURVEY IS PROVIDED FOR THE BENEFIT OF THE CONTRACTOR AND GENERAL DESIGN INTENT IS SHOWN. NO ADDITIONAL COSTS WILL BE ALLOWED SHOULD INFORMATION SHOWN ON THE SURVEY AND FIELD DATA VARY.

LEGEND - THE GOW SCHOOL

EXISTING	PROPOSED	DESCRIPTION
---	---	CONTRACT LIMIT LINE
---	---	MATCHLINE
---	---	STREET LINE / PROPERTY EDGE
---	---	CONTOUR
---	---	GRANITE CURB
---	---	PAVEMENT EDGE
---	---	SAUCUT LINE
---	---	CURB REMOVAL
---	---	UTILITY REMOVAL
---	---	OVERHEAD WIRES
---	---	WATER LINE
---	---	GAS LINE
---	---	BURIED TELEPHONE LINE
---	---	BURIED ELECTRIC LINE
---	---	SANITARY SEWER - SIZE / TYPE
---	---	STORM SEWER - SIZE / TYPE
---	---	STORMWATER MANAGEMENT TRENCH
---	---	IRON ROD FOUND
---	---	UTILITY POLE
---	---	CATCH BASIN / STORM INLET
---	---	AREA DRAIN
---	---	STORM MANHOLE
---	---	WINDOW WELL
---	---	LANDSCAPE AREA
---	---	CLEANOUT
---	---	ROOF DRAIN
---	---	AIR CONDITIONING UNIT
---	---	ELECTRIC METER
---	---	GAS METER
---	---	SEPTIC VENT
---	---	FINISH FLOOR ELEVATION
---	---	SIGN
---	---	VINYL CLAD CHAIN LINK FENCE
---	---	SPOT GRADE
---	---	FIELD VERIFY
---	---	TYPICAL
---	---	FOOTING DRAIN
---	---	PERIMETER DRAIN
---	---	TOP/BOTTOM OF CURB
---	---	TOP/BOTTOM OF STAIR
---	---	LOWER FINISH ELEVATION
---	---	TREE REMOVAL
---	---	TREES / SHRUBS
---	---	DETAIL FLAG
---	---	CONSTRUCTION NOTE
---	---	REMOVE EXISTING PAVEMENT
---	---	REMOVE ASPHALT TO SUBBASE
---	---	3 1/2" ASPHALT ON EX. COMPACTED SUBBASE
---	---	MEDIUM DUTY ASPHALT
---	---	HEAVY DUTY ASPHALT
---	---	HEAVY DUTY CONCRETE WITH SCORING
---	---	STANDARD CONCRETE WITH SCORING
---	---	LAWN TYPE 1 - 4" TOPSOIL, SEED AND MULCH
---	---	LAWN TYPE 2 - 4" TOPSOIL, SEED AND STRAW MAT

GOW - SURVEY



50 Elk St. Buffalo, NY 14210
 17 Phipps St., Suite 20 Rochester, NY 14607
 Fax: 716.842.1807 Fax: 585.461.4771
 Ph: 716.842.1800
 www.youngwright.com

TBC
 Engineering, P.C.
 Buffalo + Rochester
 Mechanical + Electrical
 Communications
 16 Main Center
 2495 Main St., Suite 318
 Buffalo, NY 14214
 P: 716.838.2319
 F: 716.838.2319
 www.tbcepc.com

appel osborne
 landscape architecture
 100 West Broadway, Suite 200
 Buffalo, NY 14202
 Phone: (716) 835-1100
 Fax: (716) 835-1101
 www.aosapp.com

Jensen BRV
 ENGINEERING, PLLC
 Structural Engineering Consultants
 1623 EAST MAIN STREET
 ROCHESTER, NEW YORK 14609
 phone: (585) 492-8130
 fax: (585) 482-0440
 www.jensenbrv.com

Project Information

HOWARD HALL

THE GOW SCHOOL
 2485 EMERY ROAD
 SOUTH WALES, NY 14139

NOT FOR CONSTRUCTION

Issue Date: 11-25-22

Rev	Date	Description
1	11/15/22	SITE PLAN REVIEW
-	-	-
-	-	-
-	-	-
-	-	-
-	-	-
-	-	-
-	-	-
-	-	-

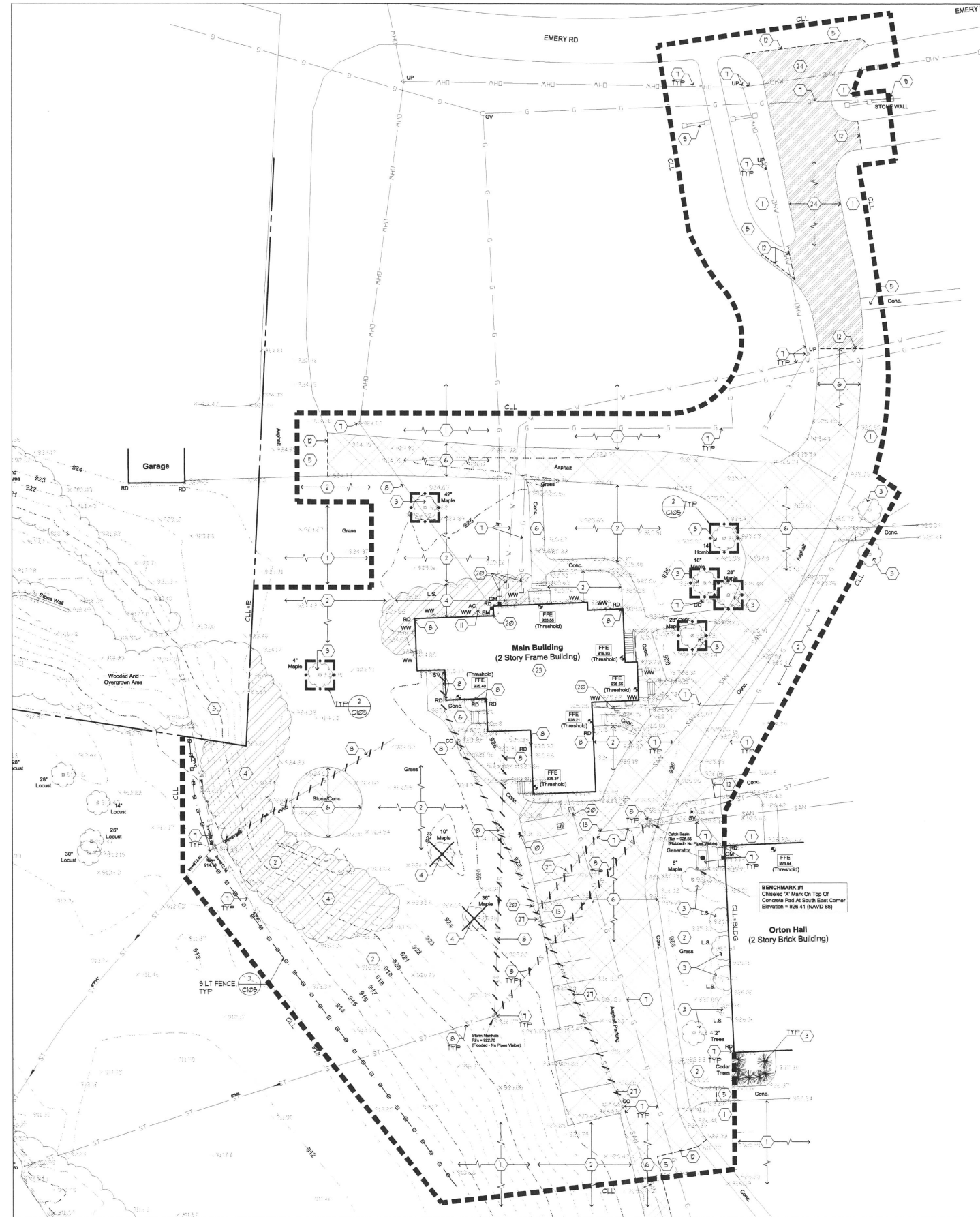
Project No. 18008
 Drawn By
 Copyright 2022, Young Architectural, LLC

Sheet Title

SURVEY

This is a single sheet of a cohesive set of construction documents, including drawings and specifications. Interpretation of the information presented is to be based on the entire set of documents.

Sheet No.
C100
GOW

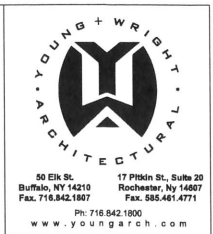


GOW - SITE PREPARATION PLAN



SITE PREPARATION and CONSTRUCTION NOTES - THE GOW SCHOOL

- 1 EXISTING LAWN AREA REMAINS PROTECT.
- 2 STRIP EXISTING TOPSOIL AND STOCK PILE FOR REUSE ONSITE IN AN AREA AS SHOWN ON PLANS OR AS DIRECTED BY THE OWNER. TEMPORARILY SEED ENTIRE PILE IMMEDIATELY AND SURROUND WITH SILT FENCE.
- 3 EXISTING VEGETATION REMAINS PROTECT AT ALL TIMES AS SHOWN ON THE PLANS AND AS SPECIFIED. DO NOT PLANT VEHICLES/EQUIPMENT OR STORE MATERIALS WITHIN DRIP LINES OF TREES.
- 4 REMOVE EXISTING VEGETATION, INCLUDING ALL STUMPS AND ROOTS AND DISPOSE OFF SITE. BACKFILL VOID WITH IMPORTED GRANULAR BACKFILL COMPACTED TO MINIMUM 95% OF IN PLACE DRY DENSITY.
- 5 EXISTING PAVEMENT REMAINS PROTECT. REPLACE ANY PAVEMENT DAMAGED DURING CONSTRUCTION OPERATIONS.
- 6 REMOVE EXISTING PAVEMENT SURFACE AND HAUL OFF SITE OR MILL AND USE AS GENERAL EARTH FILL WHEN MEETING SPECIFIED SIEVE REQUIREMENTS. REMOVE GRANULAR BASE COURSE AND HAUL OFF SITE OR USE AS GENERAL EARTH FILL WHEN MEETING SPECIFIED SIEVE REQUIREMENTS.
- 7 EXISTING SITE UTILITY REMAINS PROTECT.
- 8 REMOVE EXISTING SITE UTILITY & DISPOSE OFF SITE. BACK FILL VOID WITH IMPORTED GRANULAR BACKFILL, COMPACTED TO MINIMUM 95% OF IN PLACE DRY DENSITY.
- 9 EXISTING SITE FEATURE REMAINS PROTECT.
- 10 REMOVE EXISTING SITE FEATURE AND DISPOSE OFF SITE, INCLUDING ANY ASSOCIATED FOOTINGS OR UNDERDRAINS. BACKFILL VOID WITH IMPORTED GRANULAR BACKFILL COMPACTED TO 95% OF IN PLACE DRY DENSITY.
- 11 REMOVE EXISTING SITE FEATURE AND RETURN TO OWNER.
- 12 SAW CUT NEAT, STRAIGHT EDGE PRIOR TO PAVING AT CONCRETE SIDEWALKS REMOVE AT NEAREST SCORE JOINT.
- 13 VERIFY LOCATION, ELEVATION, INVERT AND TYPE OF EXISTING PIPE PRIOR TO CONSTRUCTION. NOTIFY LANDSCAPE ARCHITECT OF ANY DISCREPANCY WITH SURVEY OR PROPOSED WORK.
- 14 ADJUST UTILITY TO FINISHED GRADE.
- 15 MEET EXISTING LINE AND GRADE.
- 16 SLIP DOG/EL NEW CONCRETE WALK INTO EXISTING CONCRETE WALK OR BUILDING FOUNDATION WALL WITH NO. 4 SLIP DOGEL, 18" LONG, 1" O.C. 2" CLEAR MINIMUM FROM SURFACE. INSERT DOGELS EQUAL LENGTH INTO EXISTING AND NEW CONCRETE. PROVIDE EXPANSION JOINT AND SEALANT.
- 17 ALIGN NEW EDGE WITH EXISTING.
- 18 CAP END SILT TIGHT.
- 19 PROVIDE HOT TAR ASPHALT CRACK SEALER BETWEEN EXISTING AND NEW ASPHALT JOINT.
- 20 DISCONNECT UTILITY PRIOR TO DEMOLITION OF BUILDING. COORDINATE WORK WITH OWNER & APPLICABLE UTILITY COMPANY.
- 21 PROVIDE FERROUS COUPLER OR SIMILAR BILT TIGHT JOINT BETWEEN EXISTING PIPE AND NEW STORM PIPE. ALLOW INSPECTION BY ARCHITECT PRIOR TO BACKFILLING. NOTIFY ARCHITECT WHEN READY TO BACKFILL. WHEN CONNECTING DISSIMILAR PIPES, PROVIDE MARIAC DISSIMILAR PIPE COUPLER.
- 22 CORE INTO EXISTING STRUCTURE TO ALLOW INSTALLATION OF PROPOSED PIPE. MORTAR VOID BETWEEN OUTSIDE OF PIPE WALL TO STRUCTURE EDGE WATER TIGHT. CLEAN EXISTING STRUCTURE OF ANY DEBRIS PRIOR TO INSTALLATION OF NEW PIPE.
- 23 EXISTING BUILDING TO BE DEMOLISHED, INCLUDING FOUNDATION. COORDINATE WITH OWNER AND IDENTIFY ITEMS TO BE SALVAGED. REMOVE ALL DEBRIS & LEGALLY DISPOSE OFF SITE. COORDINATE UTILITY DISCONNECTIONS WITH APPLICABLE UTILITY COMPANY. BACKFILL VOID WITH COMPACTED STRUCTURAL FILL MATERIAL.
- 24 MILL EXISTING ASPHALT SURFACE TO 1 1/2" DEPTH & HAUL OFF SITE.
- 25 CLEAN EXISTING ASPHALT PAVEMENT SURFACE PRIOR TO ASPHALT OVERLAY. PROVIDE ASPHALT CRACK FILLER ON PAVEMENT CRACKS OR SEAMS.
- 26 INSTALL PIPE TO WITHIN FIVE FEET OF BUILDING. CAP ENDS. PLUMBING CONTRACTOR TO MAKE FINAL CONNECTION OF BUILDING SYSTEM TO SITE UTILITY SYSTEM. COORDINATE ALL WORK AND INVERTS WITH PLUMBING CONTRACTOR PRIOR TO STARTING WORK.
- 27 MAINTAIN SANITARY SEWER UNTIL NEW SERVICE IS COMPLETE.
- 28 CONTRACTOR SHALL FIELD LOCATE CONTINUATION OF STORM PIPE/UNDERDRAINAGE. REPORT FINDINGS TO ARCHITECT.



50 Elk St.
Buffalo, NY 14203
Ph: 716.842.1807

17 Piskin St., Suite 20
Rochester, NY 14607
Ph: 716.842.1800
www.youngarch.com

A red seal and a blue signature indicate an original document.

Consultants

IBC
Engineering, P.C.
Buffalo & Rochester
Mechanical & Electrical
Communications
15 Main Center
2485 Main St., Suite 318
Buffalo, NY 14214
P: 716.838.2315
F: 716.838.2319
www.ibrong.com

appel osborne
landscape architecture
102 West Broadway
Buffalo, NY 14202
Tel: 716.838.2315
www.apel-osborne.com

Jensen BRV
ENGINEERING & CONSTRUCTION, P.L.L.C.
Structural Engineering Consultants
1253 EAST MAIN STREET
ROCHESTER, NEW YORK 14609
phone: (585) 482-8130
fax: (585) 482-0440
www.jensenbrv.com

Project Information

HOWARD HALL

THE GOW SCHOOL
2485 EMERY ROAD
SOUTH WALES, NY 14139

NOT FOR CONSTRUCTION

Issue Date: 11-25-22

Rev.	Date	Description
1	11/15/22	SITE PLAN REVIEW
-	-	-
-	-	-
-	-	-
-	-	-
-	-	-
-	-	-
-	-	-

Project No. 18008
Drawn By
Copyright 2022, Young Architectural, LLC

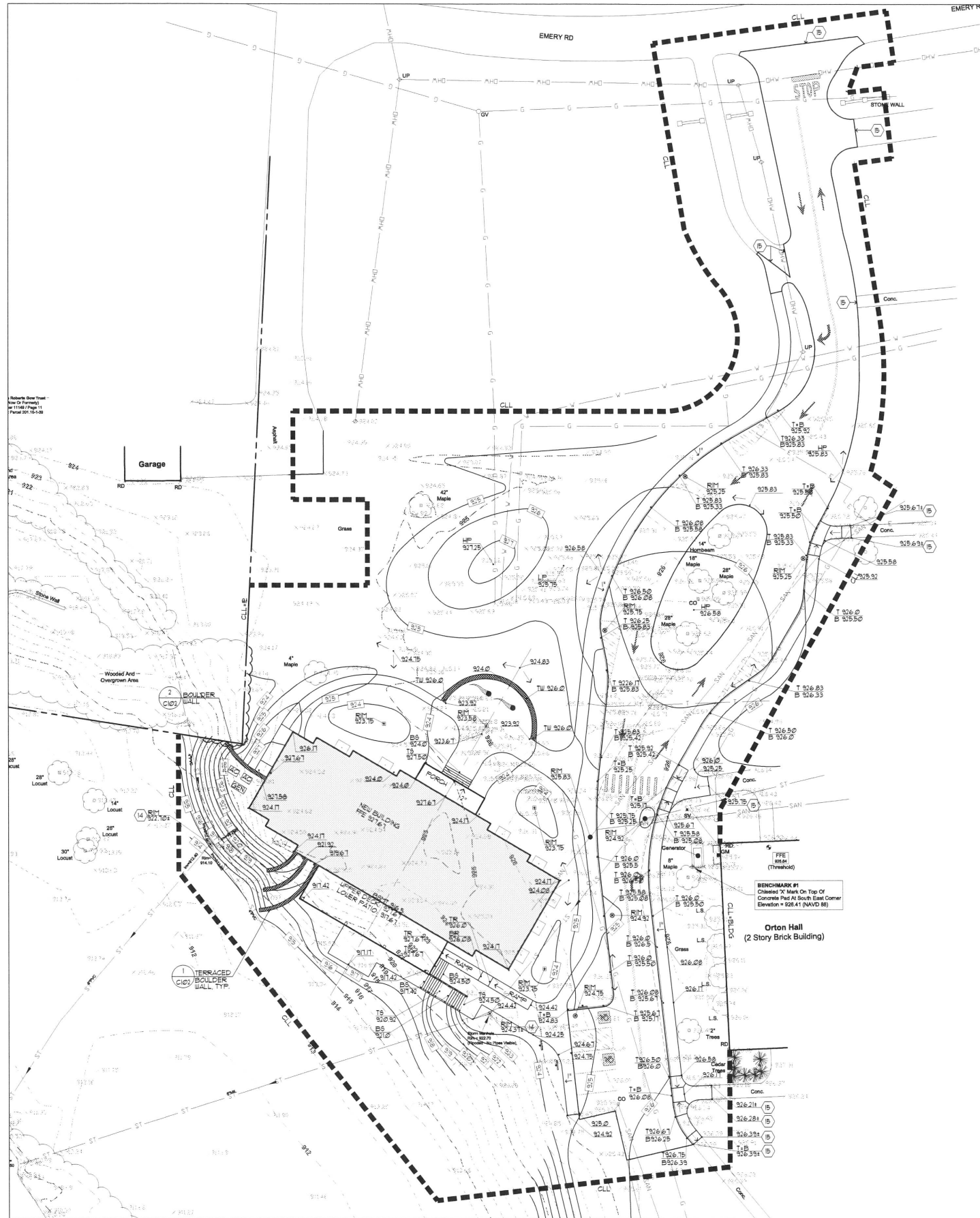
Sheet Title

SITE PREPARATION

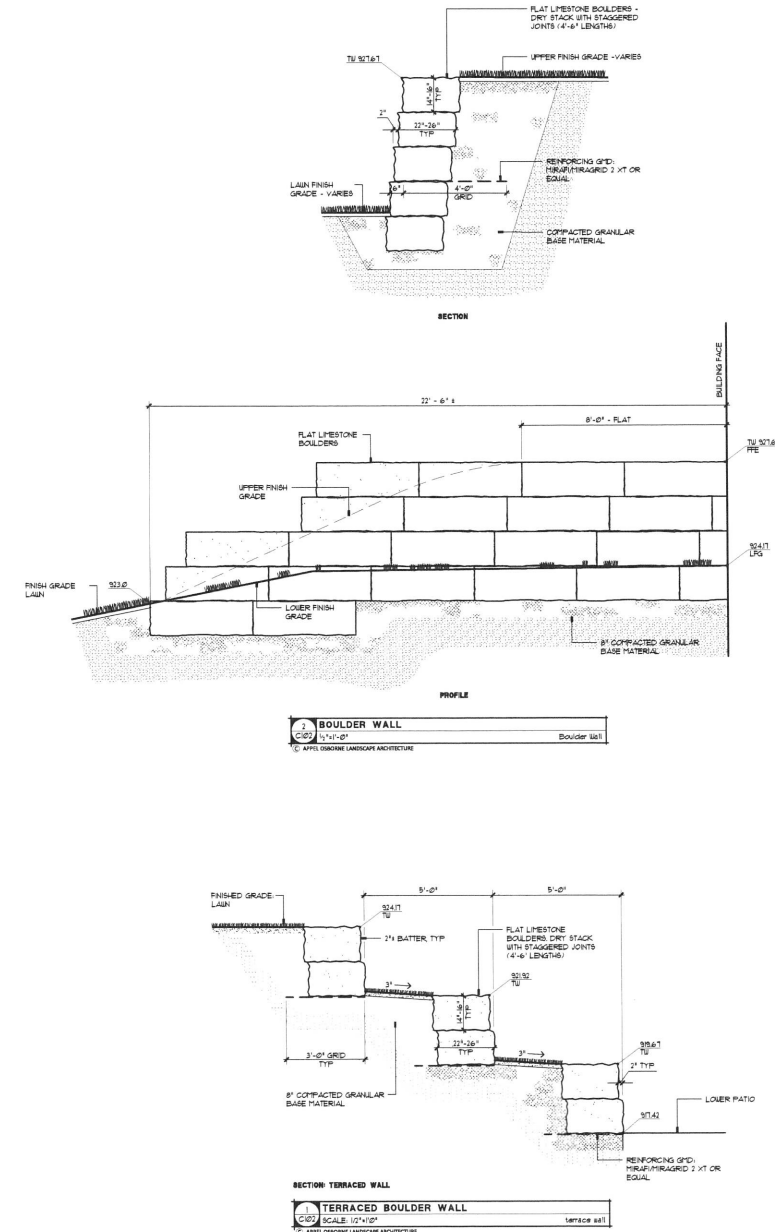
This is a single sheet of a cohesive set of construction documents, including drawings and specifications. Interpretation of the information presented is to be based on the entire set of documents.

Sheet No.

C101
GOW



GOW - GRADING AND DRAINAGE PLAN



YOUNG + WRIGHT ARCHITECTURAL
 50 Elk St. Buffalo, NY 14210
 17 Piskin St., Suite 20 Rochester, NY 14607
 Fax: 716.842.1807 Ph: 716.842.1800
 www.youngwright.com

A red seal and a blue signature indicates an original document.

Consultants

IBC
 Engineering, P.C.
 Buffalo + Rochester
 Mechanical + Electrical
 Communications
 2460 Main St., Suite 718
 Buffalo, NY 14214
 P: 716.838.2315
 F: 716.838.2319
 www.ibcing.com

appel osborne landscape architecture
 161 East Buffalo Street, Suite 100
 Buffalo, NY 14202
 Phone: 716.838.2315
 Fax: 716.838.2319
 www.appel-osborne.com

Jansen BRV
 E.N. GIANALETTI, P.E., P.L.L.C.
 Structural Engineering Consultants
 1823 EAST MAIN STREET
 ROCHESTER, NEW YORK 14609
 phone: (585) 482-8130
 fax: (585) 482-0440
 www.jansenbrv.com

Project Information

HOWARD HALL

THE GOW SCHOOL
 2485 EMERY ROAD
 SOUTH WALES, NY 14139

NOT FOR CONSTRUCTION

Issue Date: 11-25-22

Rev.	Date	Description
1	11/15/22	SITE PLAN REVIEW
-	-	-
-	-	-
-	-	-
-	-	-
-	-	-
-	-	-
-	-	-
-	-	-

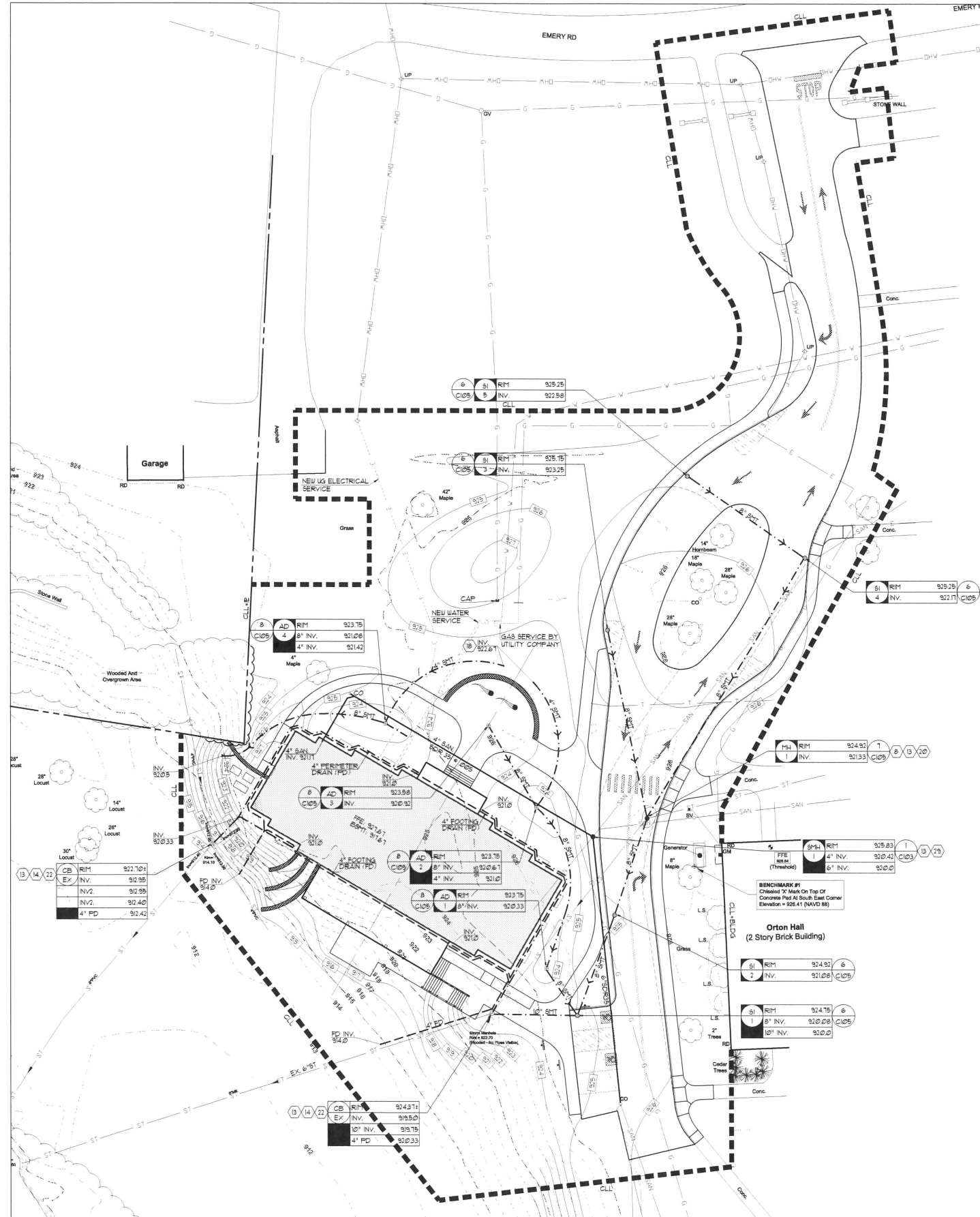
Project No. 18008
 Drawn By
 Copyright © 2022, Young Architectural, LLC

GRADING AND DRAINAGE PLAN

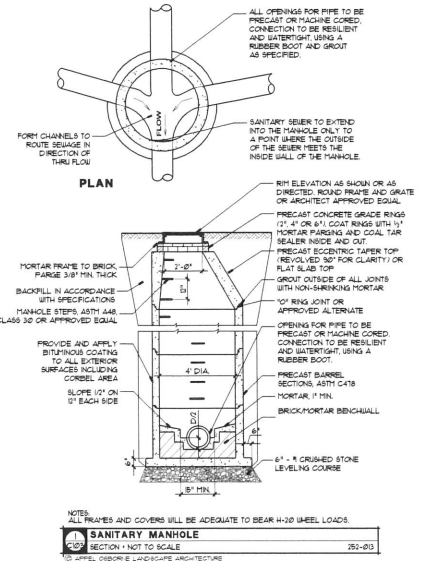
This is a single sheet of a cohesive set of construction documents, including drawings and specifications. Interpretation of the information presented is to be based on the entire set of documents.

Sheet No.

**C102
 GOW**



GOW - UTILITY PLAN



YOUNG + WRIGHT ARCHITECTURAL
 50 Elk St. Buffalo, NY 14216
 17 Pinck St., Suite 20 Rochester, NY 14607
 Ph: 716.842.1800
 Fax: 716.842.1807
 www.youngwright.com

A red seal and a blue signature indicates an original document.

Consultants

TBC
 Engineering, P.C.
 Buffalo-Rochester
 Mechanical + Electrical
 Communications
 Tel: Main Center
 2495 Main St. Suite 316
 Buffalo, NY 14214
 P: 716.838.2319
 F: 716.838.2319
 www.tbceng.com

appel osborne landscape architecture
 102 West Broadway, Suite 100
 Rochester, NY 14602
 The Office at 100 West Broadway, Suite 100
 Buffalo, NY 14202 | (716) 524-1322

Jansen BRV ENGINEERING PLLC
 Structural Engineering Consultants
 1533 EAST MAIN STREET
 ROCHESTER, NEW YORK 14609
 phone: (585) 482-8130
 fax: (585) 482-0440
 www.jansenbrv.com

Project Information

HOWARD HALL

THE GOW SCHOOL
 2485 EMERY ROAD
 SOUTH WALES, NY 14139

NOT FOR CONSTRUCTION

Issue Date: 11-25-22

Rev.	Date	Description
1	11/15/22	SITE PLAN REVIEW
-	-	-
-	-	-
-	-	-
-	-	-
-	-	-

Project No. 18008
 Drawn By
 Copyright © 2022, Young Architectural, LLC

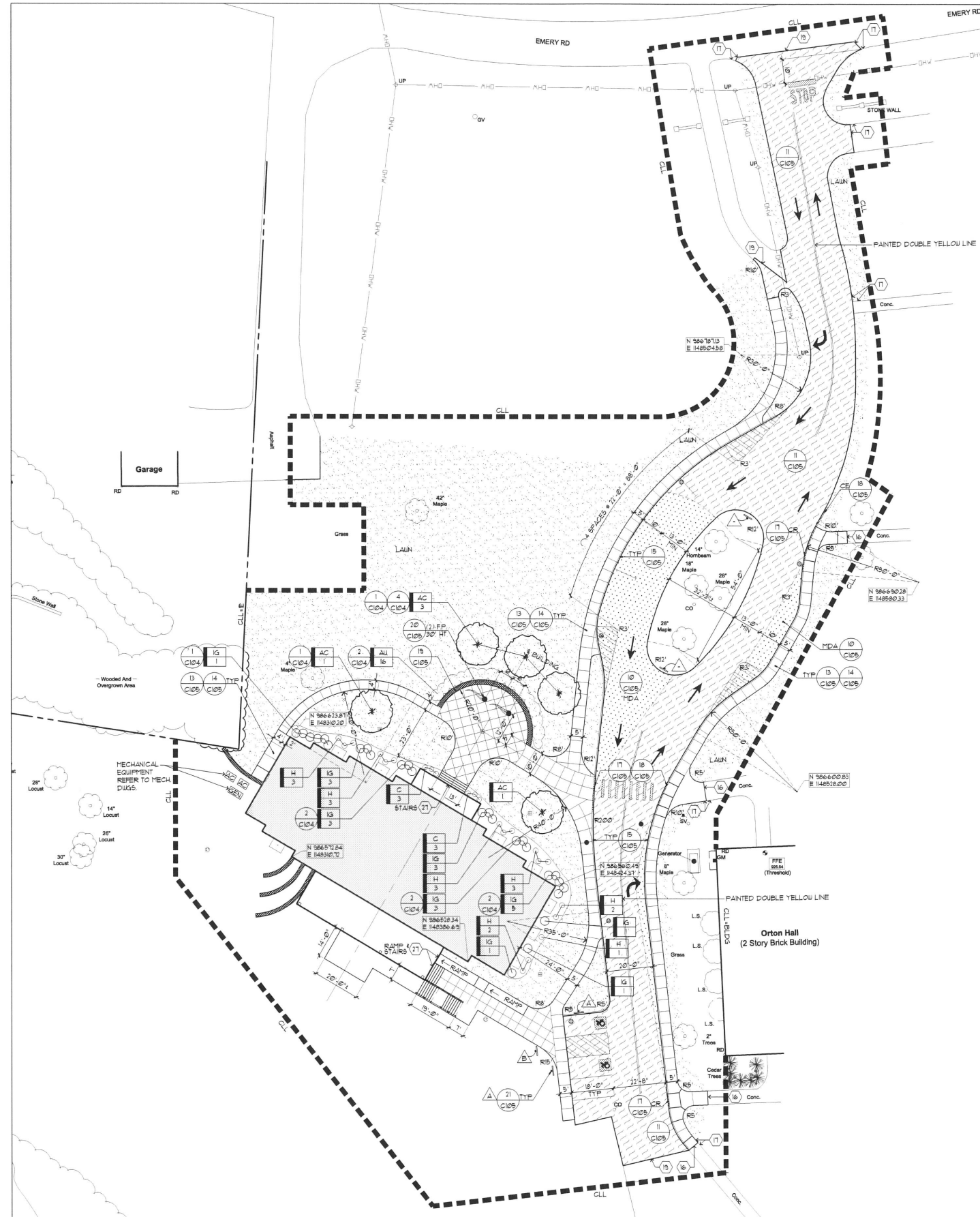
Sheet Title

UTILITY PLAN

This is a single sheet of a cohesive set of construction documents, including drawings and specifications. Interpretation of the information presented is to be based on the entire set of documents.

Sheet No.

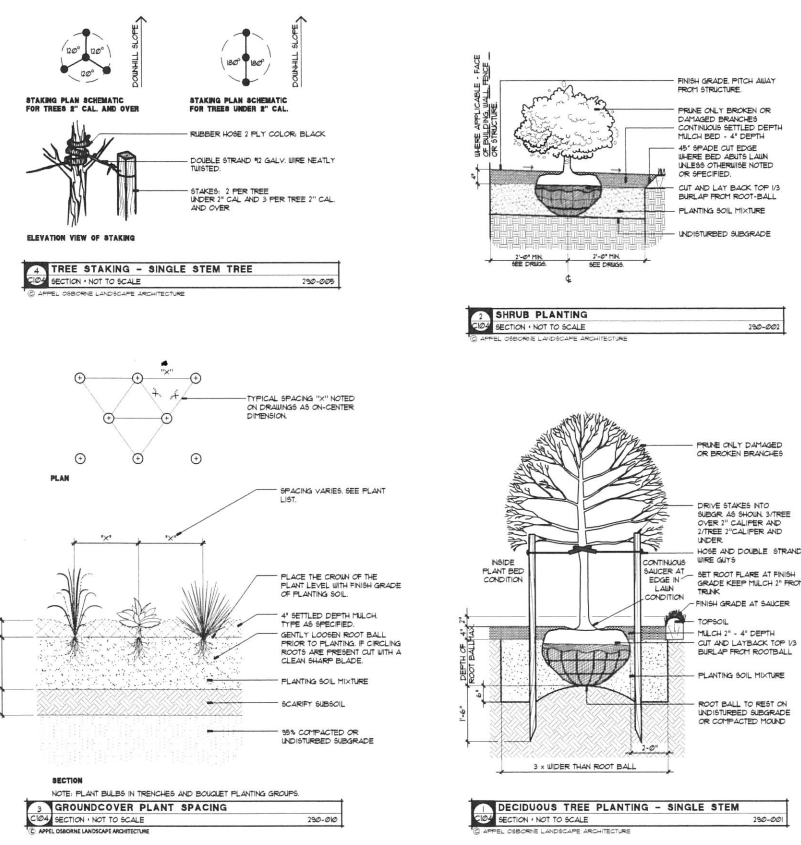
C103
GOW



PLANT LIST - THE GOW SCHOOL

KEY	BOTANICAL NAME	COMMON NAME	QTY.	ROOT & SIZE #†	SPACING	NOTES
WALL PLANTINGS						
AC	AMELANCHIER CANADENSIS	SERVICEBERRY	5	8'-25" HT.	26' O.C. OR AS SHOWN	
AU	ARCTOSTAPHYLOS UVA-URSI	BEARBERRY	16	2-7 1/2" CAL.	4' O.C. OR AS SHOWN	
FOUNDATION PLANTINGS						
C	CALAMAGROSTIS STRICTA	KARL FOERSTER FEATHER REED GRASS	6	3'-6" HT.	3' O.C. OR AS SHOWN	
H	HOSTA	HOSTA	11	2-2 1/2" CAL.	4' O.C. OR AS SHOWN	
IG	ILLEX GLABRA	INKBERRY	26	2-7 1/2" CAL.	4' O.C. OR AS SHOWN	

† PROVIDE VARIETY NOTED, DO NOT SUBSTITUTE WITH SPECIES
 †† PLANTS TO BE BALLED AND BURLAPPED UNLESS NOTED OTHERWISE
 NOTE: FINAL PLACEMENT OF PLANTS TO BE FIELD DIRECTED BY ARCHITECT



Project Information
HOWARD HALL
THE GOW SCHOOL
2485 EMERY ROAD
SOUTH WALES, NY 14139

NOT FOR CONSTRUCTION

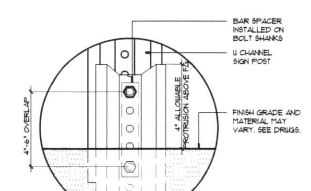
Issue Date: 11-25-22

Rev.	Date	Description
1	11/15/22	SITE PLAN REVIEW
-	-	-
-	-	-
-	-	-
-	-	-
-	-	-
-	-	-
-	-	-
-	-	-
-	-	-
-	-	-
-	-	-
-	-	-

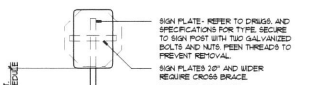
Project No. 18008
 Drawn By
 Copyright 2022, Young Architectural, LLC

Sheet Title
LAYOUT PLAN

This is a single sheet of a cohesive set of construction documents, including drawings and specifications. Interpretation of the information presented is to be based on the entire set of documents.



NOTES:
 1. LOCATE SIGN MINIMUM 3'-0" FROM CURB OR EDGE OF PAVEMENT TO PREVENT CARB PROXY HITTING SIGN POST WITH BUFFER.
 2. COORDINATE LOCATION TO AVOID UNDERGROUND UTILITIES.
 3. BREAK-AWAY SYSTEM SHALL BE TRAIL APPROVED.



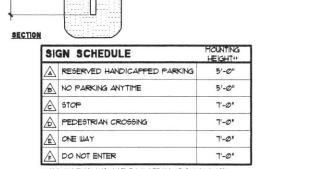
SIGN SCHEDULE

POSTING HEIGHT	POSTING
5'-0"	RESERVED HANDICAPPED PARKING
5'-0"	NO PARKING ANYTIME
7'-0"	STOP
7'-0"	PEDESTRIAN CROSSING
7'-0"	ONE WAY
7'-0"	DO NOT ENTER

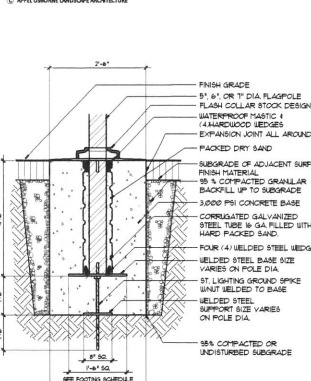
*ALL DIMENSIONS ARE TO BOTTOM OF SIGN PLATE.



TRAFFIC SIGN
 SECTION - NOT TO SCALE
 3100-002A
 © APPL OSBORNE LANDSCAPE ARCHITECTURE



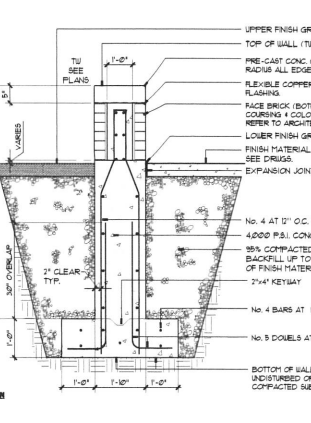
FLAGPOLE BASE
 SECTION - NOT TO SCALE
 3100-002A
 © APPL OSBORNE LANDSCAPE ARCHITECTURE



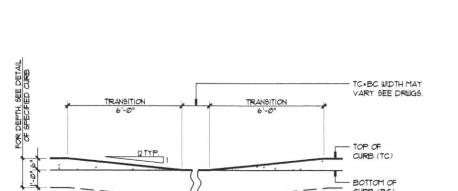
CURB RAMP WITH DETECTABLE WARNING SYSTEM
 SECTION - NOT TO SCALE
 3100-001
 © APPL OSBORNE LANDSCAPE ARCHITECTURE

FOOTINGS SCHEDULE

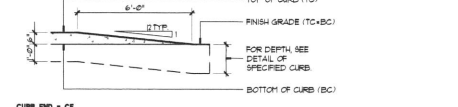
EXPOSED FLAGPOLE WITH DIA.	FOOTING x STEEL BASE	STEEL SUPPORT SPIKE	GROUND SPIKE	FOUNDATION	DEPTH OF IMBICATION
12"	2'-0" x 2'-0" x 16"	1/2" x 12"	1/2" x 12"	3'-0" DIA	3'-0"
18"	2'-0" x 2'-0" x 16"	1/2" x 12"	1/2" x 12"	3'-0" DIA	3'-0"
24"	2'-0" x 2'-0" x 16"	1/2" x 12"	1/2" x 12"	3'-0" DIA	3'-0"
30"	2'-0" x 2'-0" x 16"	1/2" x 12"	1/2" x 12"	3'-0" DIA	3'-0"
36"	2'-0" x 2'-0" x 16"	1/2" x 12"	1/2" x 12"	3'-0" DIA	3'-0"



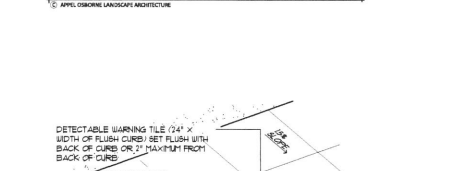
CONCRETE SEATING WALL-PARAPET
 SECTION - NOT TO SCALE
 3103-104B
 © APPL OSBORNE LANDSCAPE ARCHITECTURE



CURB RAMP - CR
 SECTION - NOT TO SCALE
 3103-001
 © APPL OSBORNE LANDSCAPE ARCHITECTURE



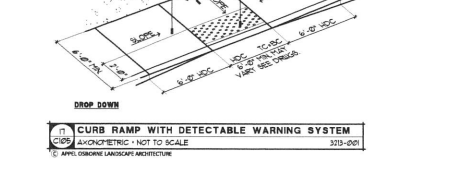
CURB RAMP AND CURB ENDING = CR/CE
 SECTION - NOT TO SCALE
 3103-002
 © APPL OSBORNE LANDSCAPE ARCHITECTURE



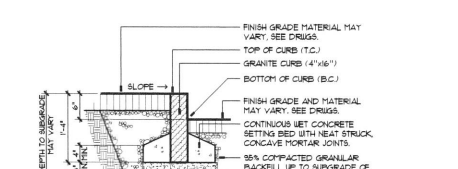
CONCRETE WALK - STANDARD
 SECTION - NOT TO SCALE
 3103-102
 © APPL OSBORNE LANDSCAPE ARCHITECTURE



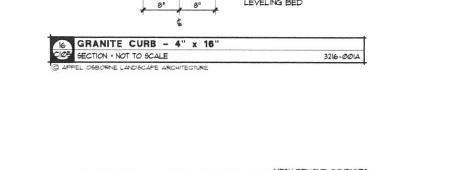
MILLED PAVEMENT TO NEW PAVEMENT TRANSITION
 SECTION - NOT TO SCALE
 3103-002A
 © APPL OSBORNE LANDSCAPE ARCHITECTURE



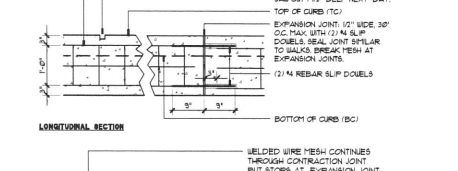
CURB RAMP WITH DETECTABLE WARNING SYSTEM
 SECTION - NOT TO SCALE
 3103-001
 © APPL OSBORNE LANDSCAPE ARCHITECTURE



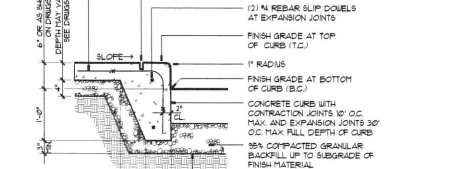
GRANITE CURB - 4" x 16"
 SECTION - NOT TO SCALE
 3106-000A
 © APPL OSBORNE LANDSCAPE ARCHITECTURE



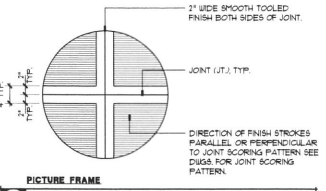
FLAGPOLE BASE
 SECTION - NOT TO SCALE
 3100-002A
 © APPL OSBORNE LANDSCAPE ARCHITECTURE



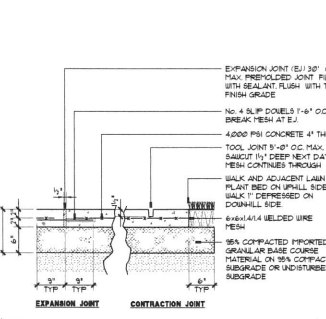
CONCRETE CURB - INTEGRAL
 SECTION - NOT TO SCALE
 3103-004A
 © APPL OSBORNE LANDSCAPE ARCHITECTURE



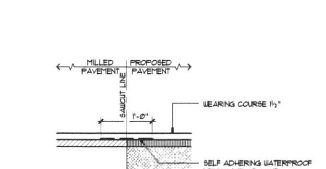
FOOTING DRAIN = FD
 SECTION - NOT TO SCALE
 3140-100
 © APPL OSBORNE LANDSCAPE ARCHITECTURE



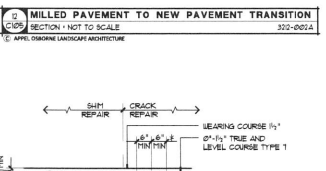
CONCRETE WALK AND FINISHED PAD
 SECTION - NOT TO SCALE
 3103-101
 © APPL OSBORNE LANDSCAPE ARCHITECTURE



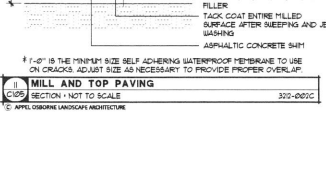
CONCRETE WALK - STANDARD
 SECTION - NOT TO SCALE
 3103-102
 © APPL OSBORNE LANDSCAPE ARCHITECTURE



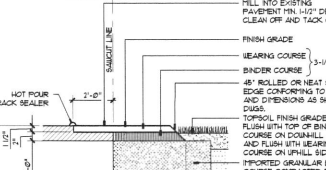
MILLED PAVEMENT TO NEW PAVEMENT TRANSITION
 SECTION - NOT TO SCALE
 3103-002A
 © APPL OSBORNE LANDSCAPE ARCHITECTURE



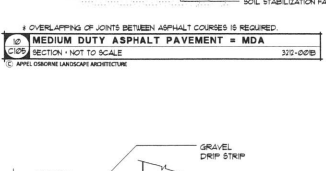
CURB RAMP WITH DETECTABLE WARNING SYSTEM
 SECTION - NOT TO SCALE
 3103-001
 © APPL OSBORNE LANDSCAPE ARCHITECTURE



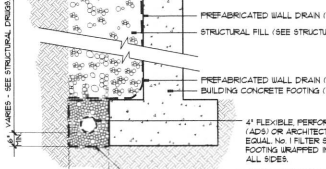
GRANITE CURB - 4" x 16"
 SECTION - NOT TO SCALE
 3106-000A
 © APPL OSBORNE LANDSCAPE ARCHITECTURE



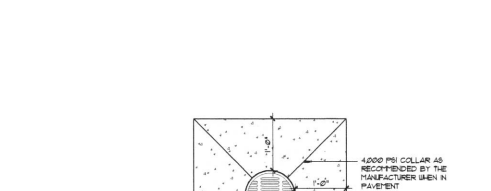
FLAGPOLE BASE
 SECTION - NOT TO SCALE
 3100-002A
 © APPL OSBORNE LANDSCAPE ARCHITECTURE



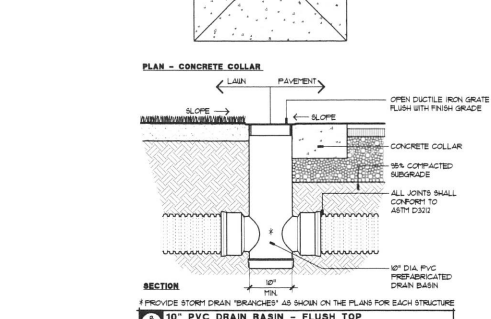
CONCRETE CURB - INTEGRAL
 SECTION - NOT TO SCALE
 3103-004A
 © APPL OSBORNE LANDSCAPE ARCHITECTURE



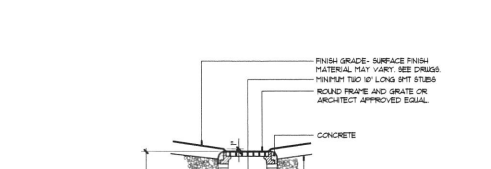
FOOTING DRAIN = FD
 SECTION - NOT TO SCALE
 3140-100
 © APPL OSBORNE LANDSCAPE ARCHITECTURE



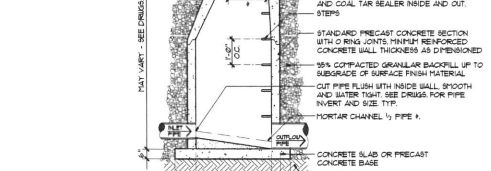
CONCRETE COLLAR
 SECTION - NOT TO SCALE
 3140-100A
 © APPL OSBORNE LANDSCAPE ARCHITECTURE



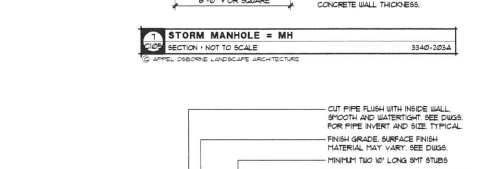
CONCRETE WALK - STANDARD
 SECTION - NOT TO SCALE
 3103-102
 © APPL OSBORNE LANDSCAPE ARCHITECTURE



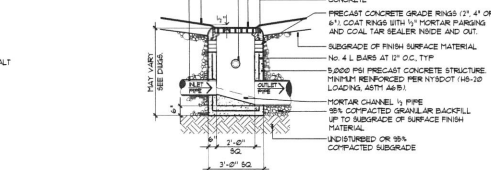
MILLED PAVEMENT TO NEW PAVEMENT TRANSITION
 SECTION - NOT TO SCALE
 3103-002A
 © APPL OSBORNE LANDSCAPE ARCHITECTURE



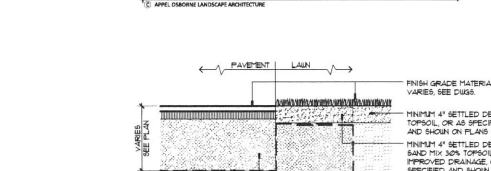
CURB RAMP WITH DETECTABLE WARNING SYSTEM
 SECTION - NOT TO SCALE
 3103-001
 © APPL OSBORNE LANDSCAPE ARCHITECTURE



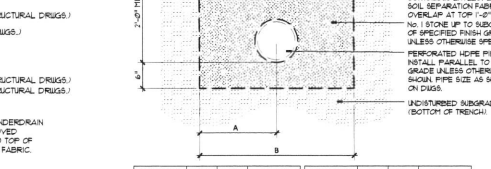
GRANITE CURB - 4" x 16"
 SECTION - NOT TO SCALE
 3106-000A
 © APPL OSBORNE LANDSCAPE ARCHITECTURE



FLAGPOLE BASE
 SECTION - NOT TO SCALE
 3100-002A
 © APPL OSBORNE LANDSCAPE ARCHITECTURE



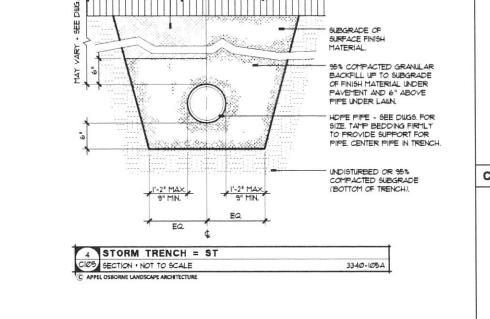
CONCRETE CURB - INTEGRAL
 SECTION - NOT TO SCALE
 3103-004A
 © APPL OSBORNE LANDSCAPE ARCHITECTURE



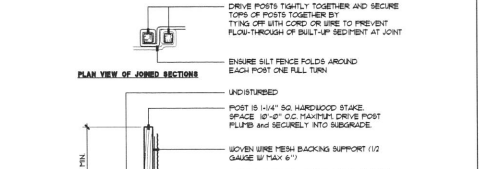
FOOTING DRAIN = FD
 SECTION - NOT TO SCALE
 3140-100
 © APPL OSBORNE LANDSCAPE ARCHITECTURE



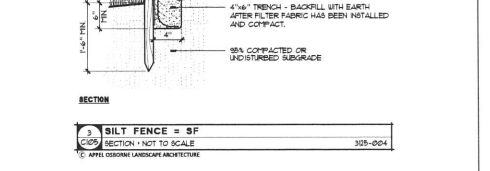
STORM TRENCH = ST
 SECTION - NOT TO SCALE
 3140-100A
 © APPL OSBORNE LANDSCAPE ARCHITECTURE



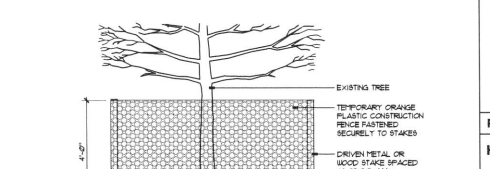
CONCRETE WALK - STANDARD
 SECTION - NOT TO SCALE
 3103-102
 © APPL OSBORNE LANDSCAPE ARCHITECTURE



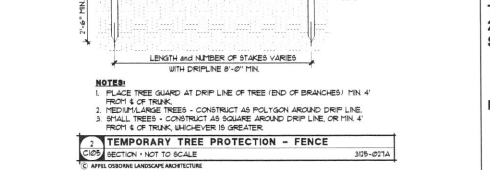
MILLED PAVEMENT TO NEW PAVEMENT TRANSITION
 SECTION - NOT TO SCALE
 3103-002A
 © APPL OSBORNE LANDSCAPE ARCHITECTURE



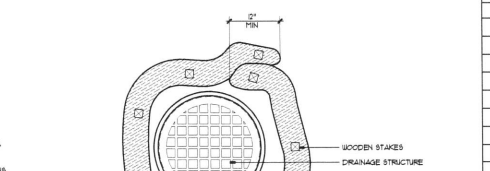
CURB RAMP WITH DETECTABLE WARNING SYSTEM
 SECTION - NOT TO SCALE
 3103-001
 © APPL OSBORNE LANDSCAPE ARCHITECTURE



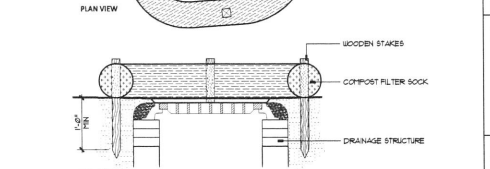
GRANITE CURB - 4" x 16"
 SECTION - NOT TO SCALE
 3106-000A
 © APPL OSBORNE LANDSCAPE ARCHITECTURE



FLAGPOLE BASE
 SECTION - NOT TO SCALE
 3100-002A
 © APPL OSBORNE LANDSCAPE ARCHITECTURE



CONCRETE CURB - INTEGRAL
 SECTION - NOT TO SCALE
 3103-004A
 © APPL OSBORNE LANDSCAPE ARCHITECTURE



FOOTING DRAIN = FD
 SECTION - NOT TO SCALE
 3140-100
 © APPL OSBORNE LANDSCAPE ARCHITECTURE



50 Elk St. Buffalo, NY 14203
 17 Pinck St., Suite 20 Rochester, NY 14607
 Ph: 716.842.1800 Fax: 585.461.4771
 www.youngwright.com

Consultants

TBC
 Engineering, P.C.
 Buffalo-Rochester
 Mechanical • Electrical
 Communications
 16 Main Center
 2495 Main St., Suite 316
 Buffalo, NY 14214
 P: 716.838.2319
 F: 716.838.2319
 www.tbccorp.com

appel osborne landscape architecture
 153 East Main Street
 Rochester, NY 14609
 Phone: (585) 482-8130
 Fax: (585) 482-0440
 www.appel-osborne.com

Jansen BRV ENGINEERING, PLLC
 Structural Engineering Consultants
 1553 EAST MAIN STREET
 ROCHESTER, NEW YORK 14609
 phone: (585) 482-8130
 fax: (585) 482-0440
 www.jansenbrv.com

Project Information

HOWARD HALL

THE GOW SCHOOL
 2485 EMERY ROAD
 SOUTH WALES, NY 14139

NOT FOR CONSTRUCTION

Issue Date: 11-25-22

Rev.	Date	Description
1	11/15/22	SITE PLAN REVIEW

Project No. 18008
Drawn By
 Copyright © 2022, Young Architectural, LLC

Sheet Title

DETAILS

This is a single sheet of a cohesive set of construction documents, including drawings and specifications. Interpretation of the information presented is to be based on the entire set of documents.

Sheet No.

C105
GOW

A red seal and a blue signature indicates an original document.

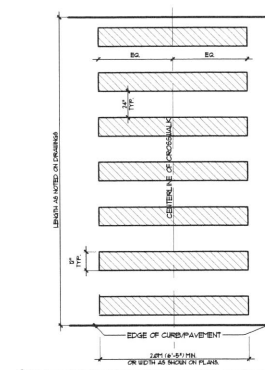
Consultants



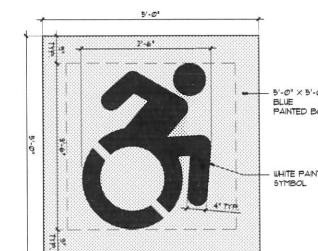
Engineering, P.C.
Buffalo-Rochester
Mechanical + Electrical
Communications
13 Main Center
2495 Main St, Suite 318
Buffalo, NY 14214
P: 716.838.2315
F: 716.838.2319
www.ibeeng.com



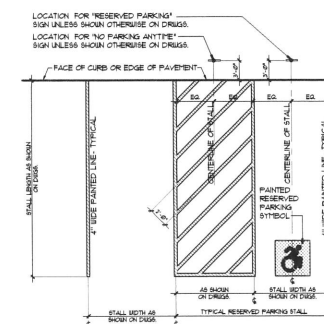
Jansen BRV
ENGINEERING, P.L.L.C.
Structural Engineering Consultants
1553 EAST MAIN STREET
ROCHESTER, NEW YORK 14609
phone: (585) 482-8130
fax: (585) 482-0440
www.jansenbrv.com



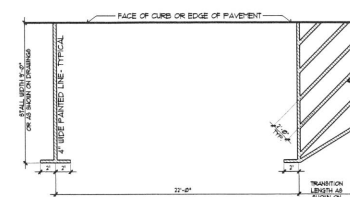
4 CROSS WALK STRIPING
SECTION - NOT TO SCALE
3330-011



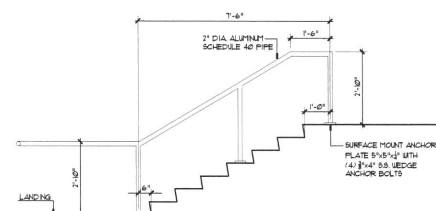
3 PAINTED RESERVE PARKING SYMBOL
SECTION - NOT TO SCALE
3330-009A



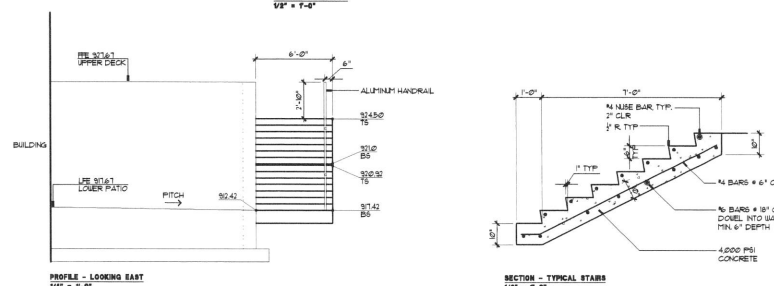
2 PARKING STALL MARKING-TYPICAL
SECTION - NOT TO SCALE
3330-009A



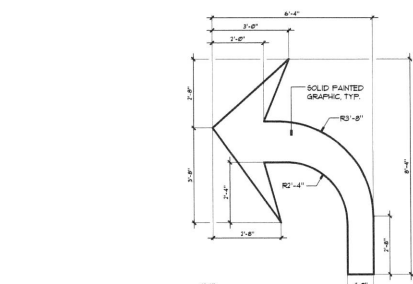
1 PARALLEL PARKING STALL MARKING-TYPICAL
SECTION - NOT TO SCALE
3330-009A



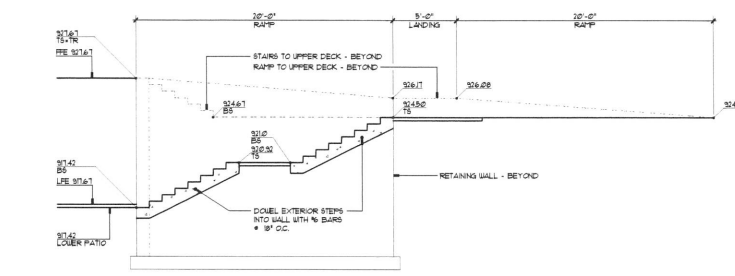
ALUMINUM HANDRAIL
1/4" x 1'-0"



SECTION - TYPICAL STAIRS
1/4" x 1'-0"



NYSDOT PAINTED ARROWS
SECTION - NOT TO SCALE
3330-010C



CONCRETE STAIRS
SECTION
1/4" x 1'-0"

Project Information

HOWARD HALL

THE GOW SCHOOL
2485 EMERY ROAD
SOUTH WALES, NY 14139

NOT FOR CONSTRUCTION

Issue Date: 11-25-22

Rev.	Date	Description
1	11/15/22	SITE PLAN REVIEW
-	-	-
-	-	-
-	-	-
-	-	-
-	-	-
-	-	-
-	-	-
-	-	-

Project No. 18008
Drawn By
Copyright 2022, Young Architectural, LLC

Sheet Title

DETAILS

This is a single sheet of a cohesive set of construction documents, including drawings and specifications. Interpretation of the information presented is to be based on the entire set of documents.

Sheet No.

C106
GOW

North By New York State Plane
 Coordinate System: NAD 83, Western Zone



SURVEY MAP REFERENCES:

- "Topographic Survey for The Gow School"
 Town of Wales - County of Erie - State of New York
 Prepared By Nussbaumer & Clarke, Inc.
 Dated February 22, 1988
- "Part Of L. 2, T. 9, R. 6"
 Town of Aurora - County of Erie - State of New York
 Prepared By Paul G. Pagano, PLS.
 Dated November 28, 2016.

LEGEND:

- ⊙ Denotes Existing Iron Rod
- ⊕ Denotes Existing Power Pole
- ⊕ Denotes Existing Storm Sewer Manhole
- ⊕ Denotes Existing Square Catch Basin
- ⊕ Denotes Existing Round Catch Basin
- WW Denotes Existing Window Well
- LS Denotes Existing Landscape Area
- CO Denotes Existing Clean Out
- RD Denotes Existing Roof Drain
- AC Denotes Existing Air Conditioning Unit
- EM Denotes Existing Electric Meter
- GM Denotes Existing Gas Meter
- SV Denotes Existing Septic Vent
- FFE Denotes Finish Floor Elevation
- Denotes Existing Sign
- ⊕ Denotes Set Bench Mark
- Denotes Spot Grade (See GN 2)
- Denotes Minor Contour Line (See GN 2)
- Denotes Major Contour Line (See GN 2)
- Denotes Property Line
- Denotes Water Line (See GN 1)
- Denotes Storm Sewer Line (See GN 1)
- Denotes Sanitary Sewer Line (See GN 1)
- Denotes Gas Line (See GN 1)
- Denotes Underground Electric Line (See GN 1)
- Denotes Telecommunications Line (See GN 1)
- Denotes Overhead Power Pole Line (See GN 1)
- Denotes Existing Fence Line
- Denotes Edge Of Water
- Denotes Existing Deciduous Tree
- ⊙ Denotes Existing Coniferous Tree
- Denotes Existing Asphalt Area

GENERAL NOTES:

- Underground facilities, structures and utilities have been placed on this drawing from field locations, where visible, record drawings provided to the undersigned, and also from discussions with the Director of Facilities. Locations should be considered approximate only. There may be other facilities or utilities, the existence of which are not known; for this reason, UFPO shall be contacted a minimum of 48 hours prior to any underground excavation.
- Elevations shown are tied to the North American Vertical Datum of 1988 (NAVD 88). Elevations are based on field measurements. Contours are merely interpolation and should be considered as such only.
- This survey was prepared without benefit of an updated abstract or title report and is therefore subject to any easements, covenants, or restrictions of record or any facts such documents would disclose.
- There was approximately 4 inches of snow cover and 3 foot snow banks at the time of the field survey. There may be site features not shown on this survey due to snow cover.

CALL BEFORE YOU DIG:
 NYS CODE RULE 753
 REQUIRES THAT YOU CALL
 BEFORE YOU DIG
Know what's Below.
Call 811 before you dig.
 CALL DIG SAFELY NEW
 YORK AT 811 OR
 1-800-952-7922

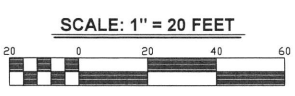
SURVEYOR'S CERTIFICATION:

The undersigned hereby certifies that this is an accurate map of actual field survey dated February 28, 2022, and that both map and survey are correct.

Christopher E. Jacobs
 Christopher E. Jacobs, L.S. #0502952

Unauthorized alteration or addition to a survey map bearing a licensed land surveyor's seal is a violation of section 7209, sub-section 2, of the New York State Education Law. The alteration of survey maps by anyone other than the original preparer is misleading, confusing and not in the general welfare and benefit of the public. Only survey maps with the surveyor's embossed seal are genuine true and correct copies of the surveyor's original work and copies. No Title Report was furnished to nor done by this company. Said property subject to all notes, restrictions, covenants, and easements of record. Any restrictions and easements not shown on record plans may not be shown hereon.

NO.	DATE	REVISION	BY	NO.	DATE	REVISION	BY

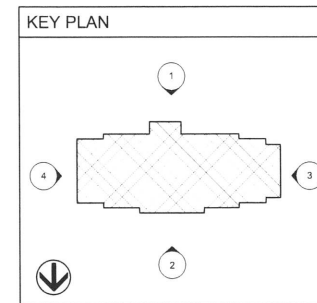


JACOBS
 LAND SURVEYING
 5553 West Road
 Munsville, NY 13409 (6) 315.495.7114
 (e) cjacob@jacobslandsurveying.com

TOPOGRAPHIC SURVEY
 Prepared for a portion of the lands of
The Gow School

2491 Emery Road Date February 28, 2022
 Town of Aurora County of Erie Project Number 2022-213-051
 State of New York A Portion Of Tax Parcel: 201-15-4-0 & 39
 CAD Drafter: C. Jacobs Reviewer: C. Jacobs

SHEET 1 OF 1



YOUNG + WRIGHT ARCHITECTURAL

50 Elk St. Buffalo, NY 14216
 17 Pitkin St., Suite 20 Rochester, NY 14607
 Fax: 716.842.1807 Ph: 716.842.1800
 www.youngandwright.com

A red seal and a blue signature indicates an original document.

Consultants



Engineering, P.C.
 Buffalo, Rochester
 Mechanical • Electrical
 Communications
 To: Main Center
 2495 Main St., Suite 318
 Buffalo, NY 14214
 P: 716.836.2319
 F: 716.836.2319
 www.ieseng.com



Jansen BRV ENGINEERING PLLC
 Structural Engineering Consultants
 1853 EAST MAIN STREET
 ROCHESTER, NEW YORK 14609
 phone: (585) 452-8130
 fax: (585) 452-0440
 www.jansenbrv.com

Project Information

HOWARD HALL

THE GOW SCHOOL
 2485 EMERY ROAD
 SOUTH WALES, NY 14139

NOT FOR CONSTRUCTION

Issue Date: 11-25-22

Revisions

Rev.	Date	Description
1	11/15/22	Site Plan Review
-	-	-
-	-	-
-	-	-
-	-	-
-	-	-

Project No. 18008

Drawn By JN

Copyright 2022, Young Architectural, LLC

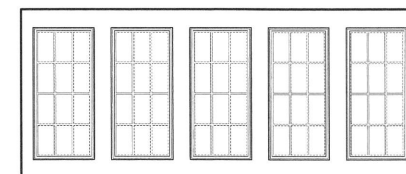
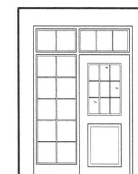
Sheet Title

EXTERIOR ELEVATIONS

This is a single sheet of a cohesive set of construction documents, including drawings and specifications. Interpretation of the information presented is to be based on the entire set of documents.

Sheet No.

A201



6 BACK PORCH SIDE EXTERIOR ELEVATION
 Scale: 1/4" = 1'-0"

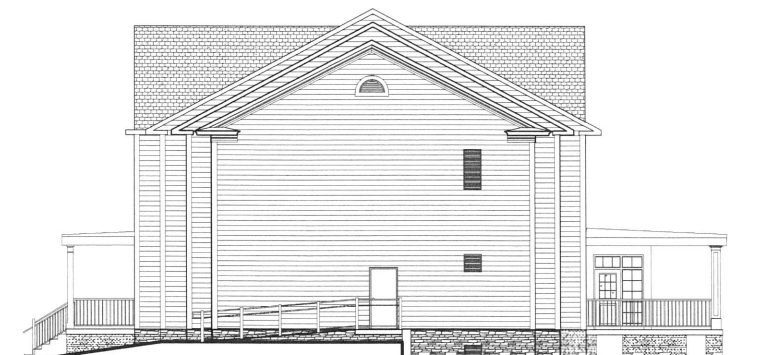
5 BACK PORCH EXTERIOR ELEVATION
 Scale: 1/4" = 1'-0"



4 EXTERIOR ELEVATION
 Scale: 1/8" = 1'-0"



2 EXTERIOR ELEVATION
 Scale: 1/8" = 1'-0"



3 EXTERIOR ELEVATION
 Scale: 1/8" = 1'-0"



1 EXTERIOR ELEVATION
 Scale: 1/8" = 1'-0"