

**PLANTING SPECIFICATION**

1. SCOPE OF WORK
  - A. THIS WORK SHALL CONSIST OF PERFORMING, CLEARING, AND GRUBBING, SOIL PREPARATION, FINISH GRADING, PLANTING, DRAINAGE, INCLUDING ALL LABOR MATERIALS, TOOLS, EQUIPMENT, AND ANY OTHER APPURTENANCES NECESSARY FOR THE COMPLETION OF THIS PROJECT.
2. MATERIALS
  - A. PLANTS - ALL PLANTS SHALL BE HEALTHY, OF NORMAL GROWTH, WELL ROOTED FREE FROM DISEASE AND INSECTS, QUALITY AND OF PLANT MATERIAL THAT SHALL CONFORM TO THE AMERICAN STANDARD FOR NURSERY STOCK (ANSI Z60.1) AND BE OF NUMBER ONE GRADE.
  - B. VARIETIES AND SIZES OF PLANTS SHALL BE AS SHOWN ON DRAWINGS
3. FERTILIZER
  - A. FERTILIZER SHALL BE MILORGANITE (8-2-0) OR APPROVED EQUAL.
4. GENERAL WORK PROCEDURES
  - A. LANDSCAPE WORK SHALL BE ACCORDING TO THE WORKMANLIKE STANDARDS ESTABLISHED FOR LANDSCAPE CONSTRUCTION AND PLANTING.
5. WEEDING
  - A. BEFORE AND DURING PRELIMINARY GRADING AND FINISH GRADING, ALL WEEDS AND GRASSES SHALL BE DUG OUT BY THE ROOTS AND DISPOSED OF AT THE CONTRACTOR'S EXPENSE.
6. SOIL CONDITIONING
  - A. CULTIVATE ALL AREAS TO BE PLANTED TO A DEPTH OF 6". ALL DEBRIS EXPOSED FROM EXCAVATION AND CULTIVATION SHALL BE DISPOSED OF AT THE CONTRACTOR'S EXPENSE.
7. PLANTING
 

POSITION TREES AND SHRUBS AT THEIR INTENDED LOCATIONS AS PER THE PLANS AND SECURE THE APPROVAL OF THE LANDSCAPE ARCHITECT BEFORE EXCAVATING PITS, MAKING NECESSARY ADJUSTMENTS AS DIRECTED.

  - A. PLANTING PITS SHALL BE DUG WITH LEVEL BOTTOMS, AS SHOWN ON THE PLANTING DETAILS.
    - 3 PARTS TOPSOIL
    - 1 PART PEAT MOSS OR COMPOST
    - 1/3 PART MILORGANITE FERTILIZER
  - B. PREPARED SOIL SHALL BE TAMPED FIRMLY AT BOTTOM OF PIT, FILL PREPARED SOIL AROUND BALL OF PLANT 1/2" WAY, AND WATER, COMPLETE BACK-FILLING AND WATER THOROUGHLY.
  - C. ALL PLANTS SHALL BE SET SO THAT, WHEN SETTLED, THEY BEAR THE SAME RELATION TO THE REQUIRED GRADE AS THEY BORE TO THE NATURAL BEFORE BEING TRANSPLANTED.
  - D. IMMEDIATELY AFTER PLANTING, STAKE ALL TREES WITH 3 CEDAR STAKES PER TREE.
  - E. PREPARE RAISED EARTH SAUCER AS WIDE AS PLANTING HOLE OF EACH PLANT.
  - F. WATER IMMEDIATELY AFTER PLANTING, WATER SHALL BE APPLIED TO EACH TREE AND SHRUB IN SUCH MANNER AS NOT TO DISTURB BACKFILL AND TO THE EXTENT THAT ALL MATERIALS IN THE PLANTING HOLE ARE THOROUGHLY SATURATED.
  - G. AFTER SHRUB BEDS AND TREE SAUCERS ARE BACKFILLED AND FINE GRADED, MULCH WITH 3" DEPTH OF DARK, SHREDDED HARDWOOD BARK MULCH.
8. FINISH GRADING
  - A. PLUSMINUS: 1 FOOT OF FINISH GRADE.
  - B. ALL LAWN AND PLANTING AREAS SHALL BE GRADED TO A SMOOTH, EVEN, UNIFORM PLANE WITH NO ABRUPT CHANGE OF SURFACE. SOIL AREAS ADJACENT TO THE BUILDING SHALL SLOPE AWAY FROM THE BUILDING.
  - C. ALL PLANTING AREAS SHALL BE GRADED AND MAINTAINED TO ALLOW FREE FLOW OF SURFACE WATER.
9. GUARANTEE
  - A. CONTRACTOR SHALL GUARANTEE ALL PLANTS FOR A PERIOD OF ONE (1) YEAR.
10. CLEAN-UP
  - A. UPON THE COMPLETION OF ALL PLANTING WORK AND BEFORE FINAL ACCEPTANCE, THE CONTRACTOR SHALL REMOVE ALL MATERIAL, EQUIPMENT AND DEBRIS RESULTING FROM HIS WORK, ALL ACCEPTABLE CONDITIONS AS APPROVED BY THE OWNERS AUTHORIZED REPRESENTATIVE.
11. MAINTENANCE
 

MAINTENANCE PERIOD TO COMMENCE AFTER FINAL INSPECTION.

  - A. MAINTENANCE PERIOD FOR THIS CONTRACT SHALL BE 90 CALENDAR DAYS COMMENCING AFTER FINAL INSPECTION OF CONSTRUCTION. MAINTAIN TREES, SHRUBS AND OTHER PLANTS BY PRUNING, CULTIVATING AND WEEDING AS REQUIRED FOR HEALTHY GROWTH. RESTORE PLANTING SAUCERS, TIGHTEN AND REPAIR STAKE AND GUY SUPPORTS AND RESET TREES AND SHRUBS TO PROPER GRADES OR VERTICAL POSITION AS REQUIRED. SPRAY AS REQUIRED TO KEEP TREES AND SHRUBS FREE OF INSECTS AND DISEASE. MAINTAIN LAWNS BY WATERING, FERTILIZING, WEEDING, MOWING, TRIMMING, AND OTHER OPERATIONS SUCH AS ROLLING, REGRADING, AND REPLANTING AS REQUIRED TO ESTABLISH A SMOOTH, ACCEPTABLE LAWN, FREE OF BROOD OR BARE AREAS.

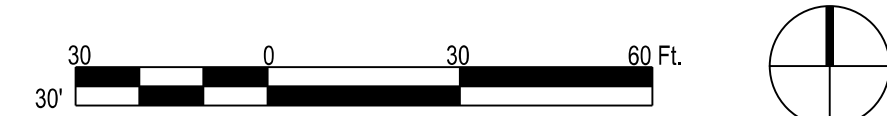
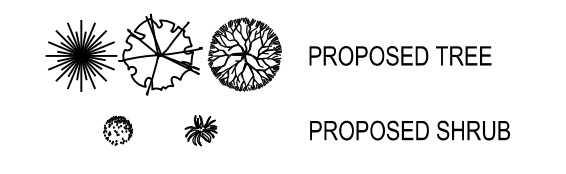
**LANDSCAPING PLAN NOTES**

1. ALL DISTURBED LAWN AREAS WITHIN THE NEW YORK STATE DEPARTMENT OF TRANSPORTATION (NYSDOT) ROW SHALL BE RESTORED USING ITEM 610.1402 TOPSOIL - ROADSIDE AND ITEM 610.1602 TURF ESTABLISHMENT - LAWNS (OR EQUAL) AND COMPLY WITH NYSDOT STANDARD SPECIFICATION SECTION 713 - LANDSCAPE DEVELOPMENT MATERIALS.

KEY	QTY	BOTANICAL NAME	COMMON NAME	MINIMUM SIZE	REMARKS
AR	4	Acer Rubrum "Red Sunset"	Red Sunset Maple	2 1/2" Caliper	
GT	5	Gleditsia Tricanthos Inermis "Skyline"	Skyline Honeylocust	3 - 3/12" Caliper	
MP	4	Malus "Prasifera"	Prune Fire Crabapple	1 3/4" Caliper	
PG	11	Picea Glauca	White Spruce	5' Ht.	Full to Ground
PP	21	Picea Pungens	Colorado Blue Spruce	6-8' Ht.	Full to Ground
BG	21	Buxus "Green Velvet"	Green Velvet Boxwood	21-24"	
HH	11	Hydrangea Macrophylla "Jane"	Little Lane Hydrangea	24" Ht.	
JO	7	Jaspis Chamaecyparis "Old Gold"	Old Gold Juniper	24-30"	
WF	16	Wegelia Florida "Alexander"	Wm. & Russ Wegelia	18-24"	

KEY	QTY	BOTANICAL NAME	COMMON NAME	MINIMUM SIZE	REMARKS
AG	500	Andropogon Glycericus	Bushy Beardgrass	2" Plug	
AI	278	Asclepias Incarnata	Swamp Milkweed	2" Plug	
CA	303	Cornus Amomum	Silly Dogwood	2" Plug	
CO	209	Cephalanthus Occidentalis	Baton Bush	2" Plug	
CP	413	Clusia Palustris	Marsh Marigold	2" Plug	
IR	432	Iris Versicolor	Blue Flag Iris	2" Plug	
IV	432	Ilex Verticillata	Winterberry	2" Plug	
LC	413	Lobelia Cardinalis	Cardinal Flower	2" Plug	
SE	225	Sanctus Cernuus	Lion's Tail	2" Plug	
SG	219	Scirpus Cyperinus	Wood Grass	2" Plug	
BN	4	Betula Nigra "Cully"	Heritage River Birch	6' Ht. Champs	Min. 3 stems

**LEGEND**



COPYRIGHT 2020 - FONTANESE FOLTS AUBRECHT ERNST ARCHITECTS, P.C. ALL RIGHTS RESERVED. NO PART OF THIS DRAWING MAY BE REPRODUCED OR COPIED IN ANY FORM BY ANY MEANS WITHOUT THE WRITTEN PERMISSION OF THE ARCHITECT.

ANY UNAUTHORIZED ALTERATION OF OR ADDITION TO THIS DRAWING OR DOCUMENT IS A VIOLATION OF SECTION 7307 OF THE NEW YORK STATE EDUCATION LAW, ARTICLE 147-A ARCHITECTURE.

**ROC**  
RURAL OUTREACH CENTER  
EAST AURORA, NY  
730 OLEAN ROAD

NO.	DATE	REVISIONS
1	08/11/2020	ISSUING LANDSCAPE REV.
2	12/02/2020	REVISIONS FOR PERMITS
3	06/23/2021	REVISIONS FOR PERMITS
4	08/23/2021	REVISIONS FOR PERMITS
5	08/23/2021	TOWN COMMENTS
6	08/23/2021	TOWN COMMENTS
7	08/23/2021	TOWN COMMENTS

**REVISIONS**

CONSULTANTS:  
**SITE ENGINEERS:**  
 C & S Engineers  
 141 Elm Street  
 Buffalo, NY 14203  
 P: (716) 847-1630

**STRUCTURAL ENGINEERS:**  
 Syracuse Engineers, PC  
 960 Bust Avenue, Suite 120  
 Buffalo, NY 14213  
 P: (716) 856-1894

**ME/P/E ENGINEERS:**  
 Buffalo Engineering, P.C.  
 4245 Union Road, Suite 204  
 Buffalo, NY 14225  
 P: (716) 633-5300

**FONTANESE FOLTS AUBRECHT ERNST ARCHITECTS**  
 A PROFESSIONAL CORPORATION  
 (716) 662-2200  
 6395 WEST QUAKER STREET  
 ORCHARD PARK, N.Y. 14127

PROJECT NO. D69.029.001  
 DATE 03/12/2021  
 SCALE AS NOTED  
 DRAWN BY JMH

DRAWING TITLE  
**LANDSCAPE PLAN**

DRAWING NO.  
**C-106**

BENCHMARK  
 PK NAIL  
 ELEVATION = 885.75'

OLEAN ROAD  
 (WITH VARIES)

446.00' DEED AND MEASURED

266.80' DEED AND MEASURED

241.80' DEED AND MEASURED

453.50' DEED AND MEASURED

313.41' DEED AND MEASURED

NORFOLK SOUTHERN RAILROAD

TRES & BRUSH

TRES & BRUSH

TRES & BRUSH

TRES & BRUSH

(12) EXISTING EVERGREEN

30" BOX CULVERT  
 INVERT = 883.50'

TELEPHONE MARKER

LIGHT STONE FILL RIP RAP

LIGHT STONE FILL RIP RAP

LIGHT STONE FILL RIP RAP

ROAD

ASPHALT DRIVE

EDGE OF PAVEMENT

EDGE OF PAVEMENT

EDGE OF PAVEMENT

EDGE OF PAVEMENT

EDGE OF PAVEMENT

EDGE OF PAVEMENT

EDGE OF PAVEMENT

EDGE OF PAVEMENT

EDGE OF PAVEMENT

EDGE OF PAVEMENT

EDGE OF PAVEMENT

EDGE OF PAVEMENT

EDGE OF PAVEMENT

EDGE OF PAVEMENT

EDGE OF PAVEMENT

EDGE OF PAVEMENT

EDGE OF PAVEMENT

EDGE OF PAVEMENT

EDGE OF PAVEMENT

EDGE OF PAVEMENT

EDGE OF PAVEMENT

EDGE OF PAVEMENT

EDGE OF PAVEMENT

EDGE OF PAVEMENT

EDGE OF PAVEMENT

EDGE OF PAVEMENT

EDGE OF PAVEMENT

EDGE OF PAVEMENT

EDGE OF PAVEMENT

EDGE OF PAVEMENT

EDGE OF PAVEMENT

EDGE OF PAVEMENT

EDGE OF PAVEMENT

EDGE OF PAVEMENT

EDGE OF PAVEMENT

EDGE OF PAVEMENT

EDGE OF PAVEMENT

EDGE OF PAVEMENT

EDGE OF PAVEMENT

EDGE OF PAVEMENT

EDGE OF PAVEMENT

EDGE OF PAVEMENT

EDGE OF PAVEMENT

EDGE OF PAVEMENT

EDGE OF PAVEMENT

EDGE OF PAVEMENT

EDGE OF PAVEMENT

EDGE OF PAVEMENT

EDGE OF PAVEMENT

EDGE OF PAVEMENT

EDGE OF PAVEMENT

EDGE OF PAVEMENT

EDGE OF PAVEMENT

EDGE OF PAVEMENT

EDGE OF PAVEMENT

EDGE OF PAVEMENT

EDGE OF PAVEMENT

EDGE OF PAVEMENT

EDGE OF PAVEMENT

EDGE OF PAVEMENT

EDGE OF PAVEMENT

EDGE OF PAVEMENT

EDGE OF PAVEMENT

EDGE OF PAVEMENT

EDGE OF PAVEMENT

EDGE OF PAVEMENT

EDGE OF PAVEMENT

EDGE OF PAVEMENT

EDGE OF PAVEMENT

EDGE OF PAVEMENT

EDGE OF PAVEMENT

EDGE OF PAVEMENT

EDGE OF PAVEMENT

EDGE OF PAVEMENT

EDGE OF PAVEMENT

EDGE OF PAVEMENT

EDGE OF PAVEMENT

EDGE OF PAVEMENT

EDGE OF PAVEMENT

EDGE OF PAVEMENT

EDGE OF PAVEMENT

EDGE OF PAVEMENT

EDGE OF PAVEMENT

EDGE OF PAVEMENT

EDGE OF PAVEMENT

EDGE OF PAVEMENT

EDGE OF PAVEMENT

EDGE OF PAVEMENT

EDGE OF PAVEMENT

EDGE OF PAVEMENT

EDGE OF PAVEMENT

EDGE OF PAVEMENT

EDGE OF PAVEMENT

EDGE OF PAVEMENT

EDGE OF PAVEMENT

EDGE OF PAVEMENT

EDGE OF PAVEMENT

EDGE OF PAVEMENT

EDGE OF PAVEMENT

EDGE OF PAVEMENT

EDGE OF PAVEMENT

EDGE OF PAVEMENT

EDGE OF PAVEMENT

EDGE OF PAVEMENT

EDGE OF PAVEMENT

EDGE OF PAVEMENT

EDGE OF PAVEMENT

EDGE OF PAVEMENT

EDGE OF PAVEMENT

EDGE OF PAVEMENT

EDGE OF PAVEMENT

EDGE OF PAVEMENT

EDGE OF PAVEMENT

EDGE OF PAVEMENT

EDGE OF PAVEMENT

EDGE OF PAVEMENT

EDGE OF PAVEMENT

EDGE OF PAVEMENT

EDGE OF PAVEMENT

EDGE OF PAVEMENT

EDGE OF PAVEMENT

EDGE OF PAVEMENT

EDGE OF PAVEMENT

EDGE OF PAVEMENT

EDGE OF PAVEMENT

EDGE OF PAVEMENT

EDGE OF PAVEMENT

EDGE OF PAVEMENT

EDGE OF PAVEMENT

EDGE OF PAVEMENT

EDGE OF PAVEMENT

EDGE OF PAVEMENT

EDGE OF PAVEMENT

EDGE OF PAVEMENT

EDGE OF PAVEMENT

EDGE OF PAVEMENT

EDGE OF PAVEMENT

EDGE OF PAVEMENT

EDGE OF PAVEMENT

EDGE OF PAVEMENT

EDGE OF PAVEMENT

EDGE OF PAVEMENT

EDGE OF PAVEMENT

EDGE OF PAVEMENT

EDGE OF PAVEMENT

EDGE OF PAVEMENT

EDGE OF PAVEMENT

EDGE OF PAVEMENT

EDGE OF PAVEMENT

EDGE OF PAVEMENT

EDGE OF PAVEMENT

EDGE