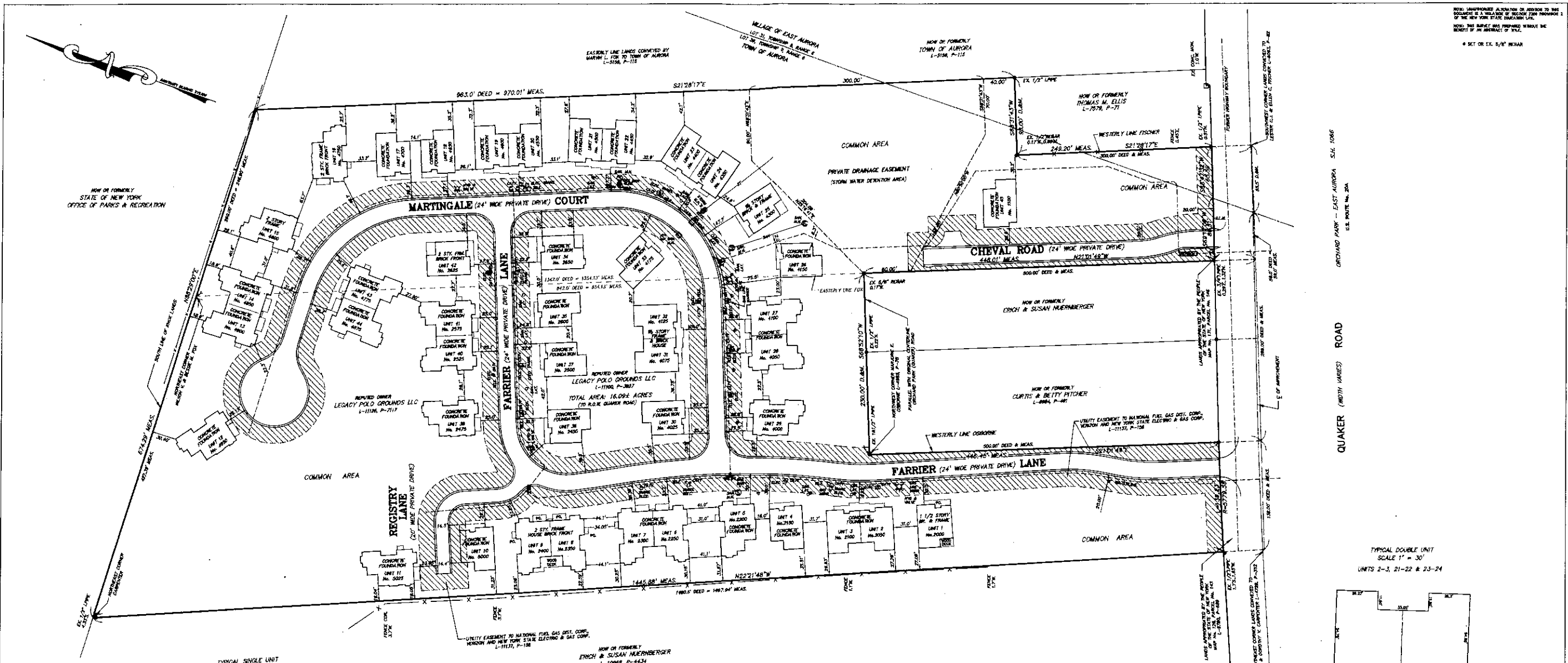
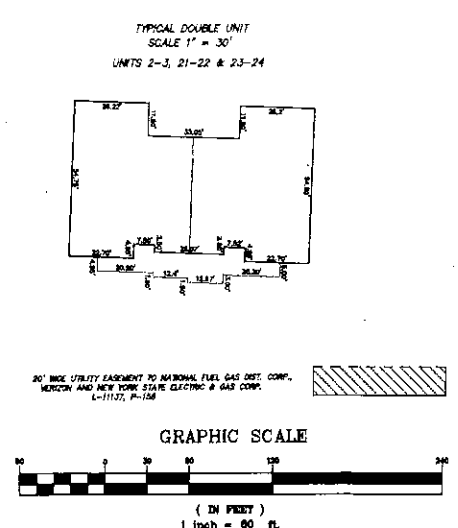
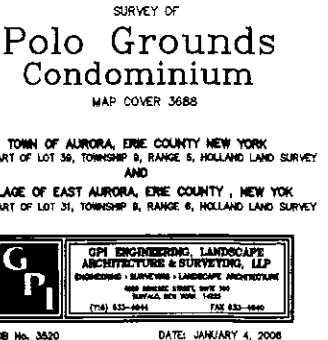
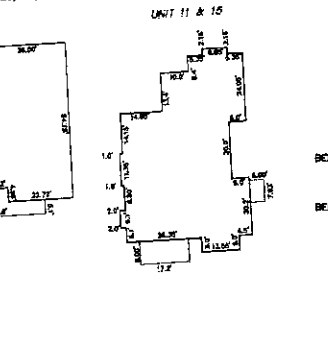
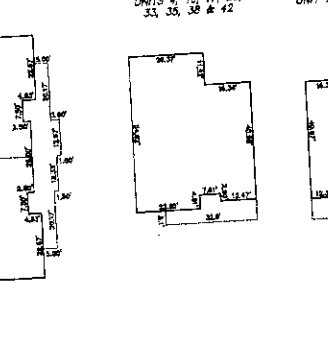
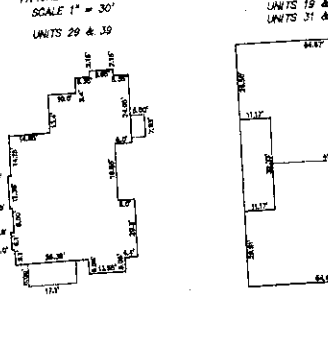
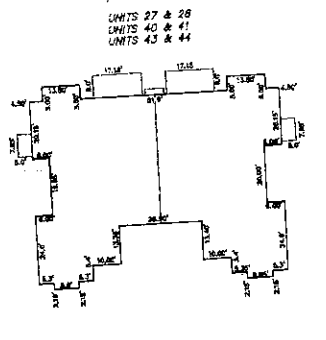
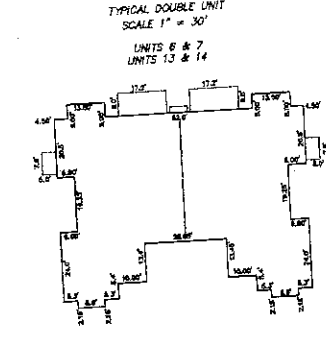
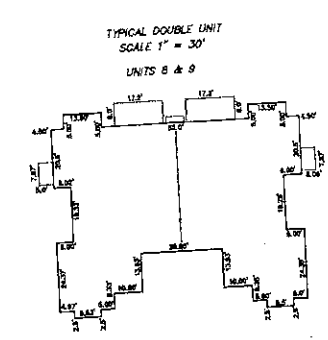
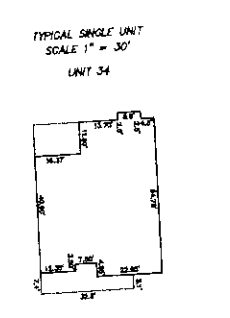
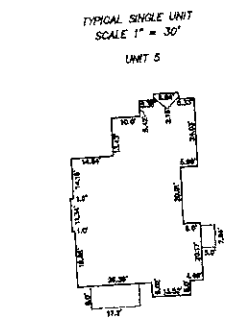


NOTE: UNAPPROVED ALLOCATION OF ADDITION TO THIS DOCUMENT IS A VIOLATION OF SECTION 208 PROVISION 2 OF THE NEW YORK STATE EASEMENT LAW.
 NOTE: THIS SURVEY WAS PREPARED WITHOUT THE BENEFIT OF AN ABSTRACT OF TITLE.
 * SET OR EX. 5/8" NEAR



DATE	REVISION/TITLE
11/16/17	FOUNDATION LOCATION UNIT 26
6/24/17	HOUSE LOCATION UNIT 25
6/24/17	FOUNDATION LOCATION UNIT 45
1/23/17	FOUNDATION LOCATION UNIT 34
8/11/16	FOUNDATION LOCATION UNIT 23 & 24
6/27/16	FOUNDATION LOCATION UNIT 37
1/12/15	FOUNDATION LOCATION UNIT 33
10/16/14	FOUNDATION LOCATION UNITS 27 & 28
10/16/14	FOUNDATION LOCATION UNIT 35
7/11/14	FOUNDATION LOCATION UNITS 2 & 3
4/8/14	FOUNDATION LOCATION UNITS 21 & 22
2/13/13	FOUNDATION LOCATION UNIT 4
10/2/13	FOUNDATION LOCATION UNIT 5
7/30/13	LOCATE UTILITIES
7/30/13	FOUNDATION LOCATION UNIT 17
2/19/13	FOUNDATION LOCATION UNIT 38
1/21/13	FOUNDATION LOCATION UNIT 18
6/19/12	HOUSE LOCATION UNIT 15
5/4/12	HOUSE LOCATION UNITS 31 & 32
11/30/11	FOUNDATION LOCATION UNIT 30
11/7/11	HOUSE LOCATION UNIT 1
8/3/11	FOUNDATION LOCATION UNIT 10
6/17/11	FOUNDATION LOCATION UNIT 29
4/25/11	FOUNDATION LOCATION UNIT 11
12/13/10	HOUSE LOCATION UNIT 42
12/1/10	FOUNDATION LOCATION UNITS 19/20 & 39
12/14/09	FOUNDATION LOCATION UNITS 43 & 44
10/12/09	FOUNDATION LOCATION UNITS 40 & 41
8/5/09	FOUNDATION LOCATION UNITS 6 & 7
4/22/09	HOUSE LOCATION UNIT 16
2/4/09	FOUNDATION LOCATION UNITS 13 & 14
1/22/09	FOUNDATION LOCATION UNIT 12
10/23/08	HOUSE LOCATION UNITS 8 & 9



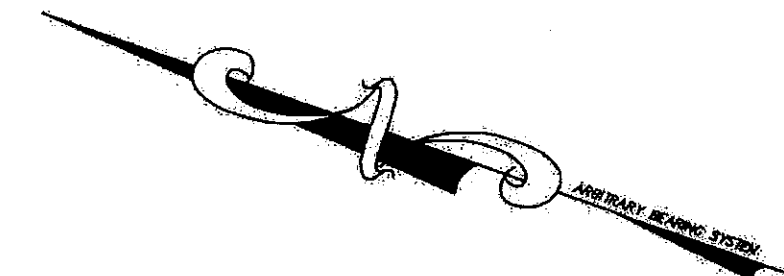
SURVEY OF
Polo Grounds Condominium
 MAP COVER 3688

TOWN OF AURORA, ERIE COUNTY, NEW YORK
 BEING PART OF LOT 30, TOWNSHIP 9, RANGE 6, HOLLAND LAND SURVEY
 AND
 VILLAGE OF EAST AURORA, ERIE COUNTY, NEW YORK
 BEING PART OF LOT 31, TOWNSHIP 9, RANGE 6, HOLLAND LAND SURVEY

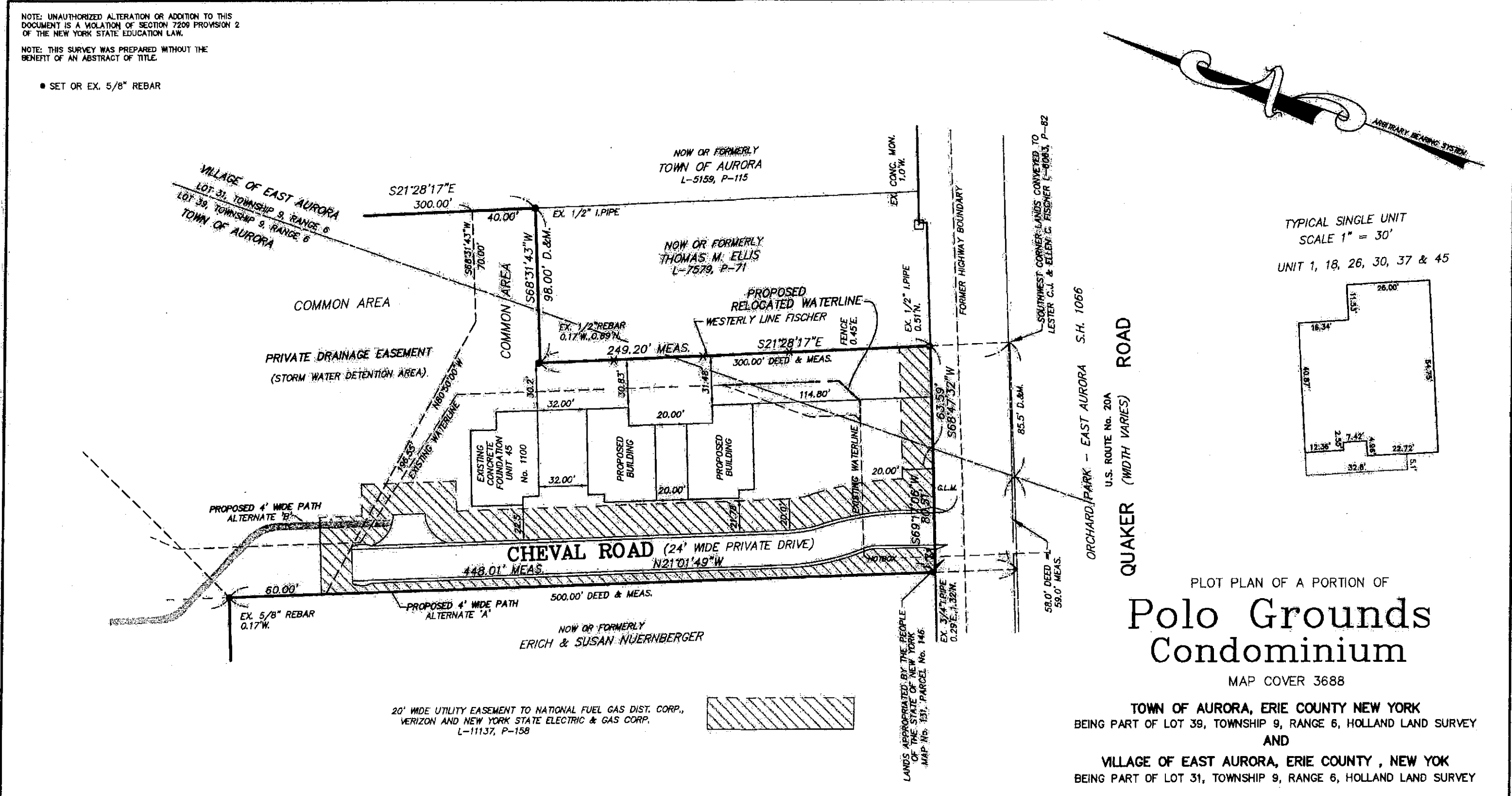
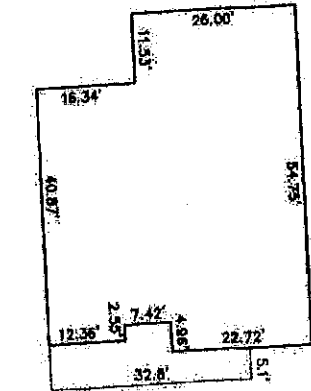
GPI ENGINEERING, LANDSCAPE ARCHITECTURE & SURVEYING, LLP
 180 HUNTER STREET, SUITE 100
 BUFFALO, NEW YORK 14203
 (716) 833-8844 FAX 833-8840

NOTE: UNAUTHORIZED ALTERATION OR ADDITION TO THIS DOCUMENT IS A VIOLATION OF SECTION 7209 PROVISION 2 OF THE NEW YORK STATE EDUCATION LAW.
 NOTE: THIS SURVEY WAS PREPARED WITHOUT THE BENEFIT OF AN ABSTRACT OF TITLE.

● SET OR EX. 5/8" REBAR



TYPICAL SINGLE UNIT
 SCALE 1" = 30'
 UNIT 1, 18, 26, 30, 37 & 45

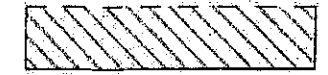


ORCHARD PARK - EAST AURORA S.H. 1066
 U.S. ROUTE No. 20A
 QUAKER (WIDTH VARIES) ROAD

PLOT PLAN OF A PORTION OF
Polo Grounds Condominium

MAP COVER 3688
 TOWN OF AURORA, ERIE COUNTY NEW YORK
 BEING PART OF LOT 39, TOWNSHIP 9, RANGE 6, HOLLAND LAND SURVEY
 AND
 VILLAGE OF EAST AURORA, ERIE COUNTY, NEW YORK
 BEING PART OF LOT 31, TOWNSHIP 9, RANGE 6, HOLLAND LAND SURVEY

20' WIDE UTILITY EASEMENT TO NATIONAL FUEL GAS DIST. CORP.,
 VERIZON AND NEW YORK STATE ELECTRIC & GAS CORP.
 L-11137, P-158



DATE	REVISION/TYPE

GPI ENGINEERING, LANDSCAPE ARCHITECTURE & SURVEYING, LLP
 ENGINEERING • SURVEYING • LANDSCAPE ARCHITECTURE
 4950 GENESEE STREET, SUITE 100
 BUFFALO, NEW YORK 14225
 (716) 633-4844 FAX 633-4940

JOB No. 3520
 SCALE: 1"=60'
 DATE: DECEMBER 10, 2019