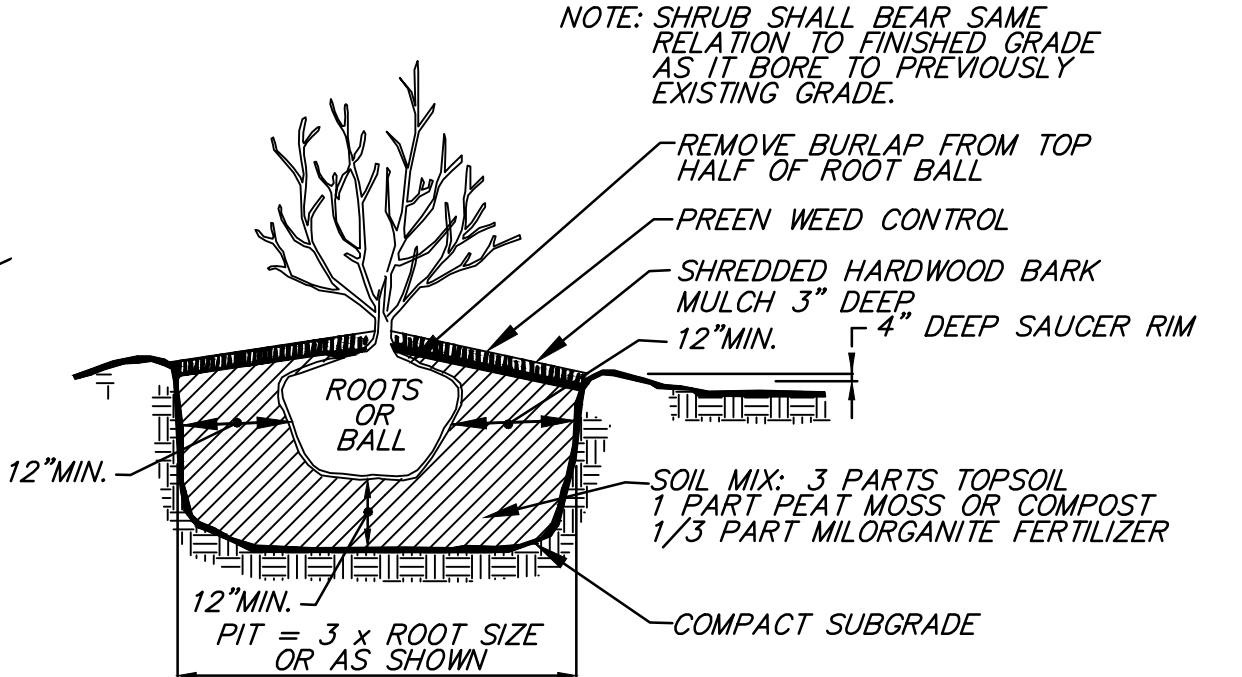
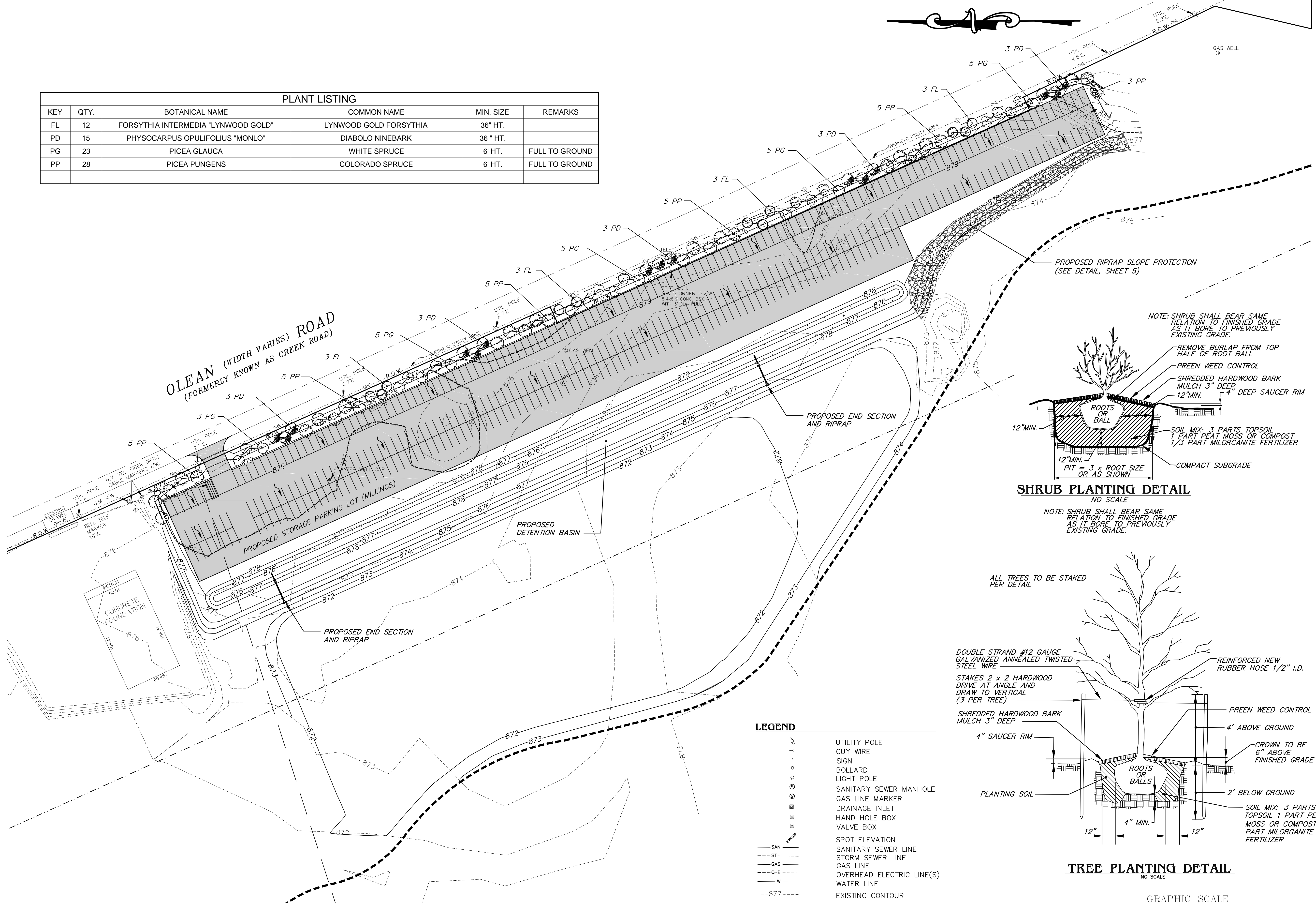
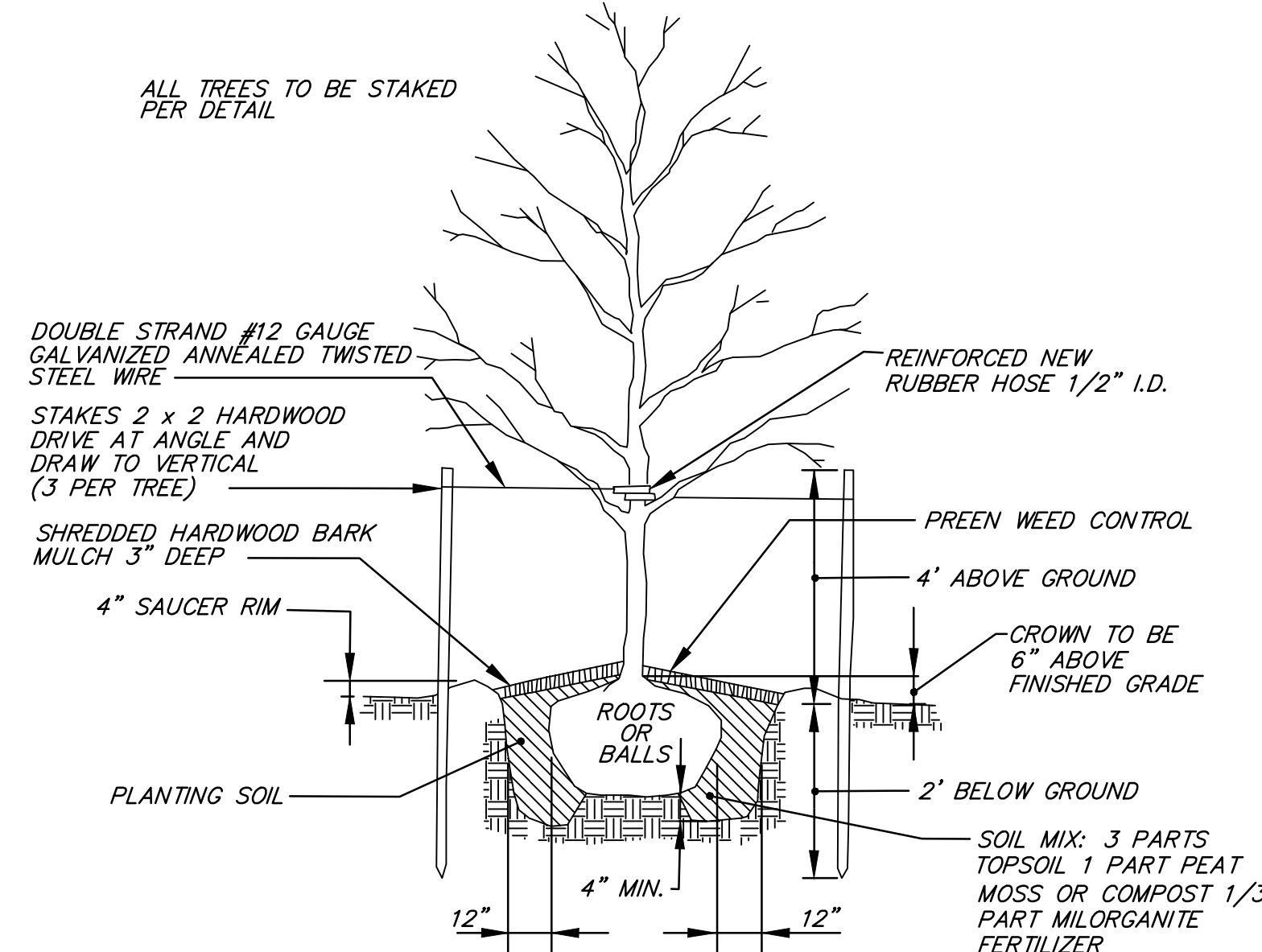


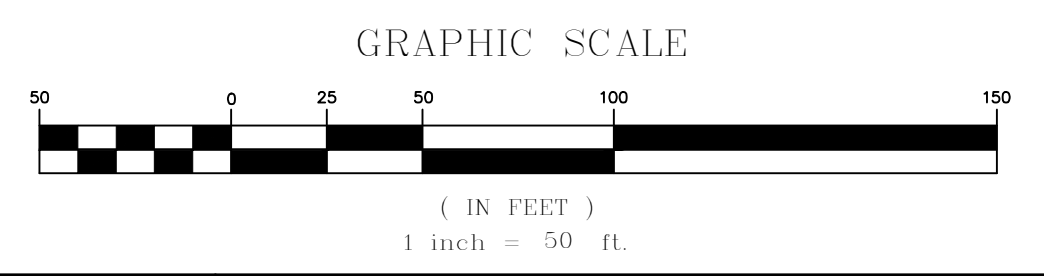
PLANT LISTING					
KEY	QTY.	BOTANICAL NAME	COMMON NAME	MIN. SIZE	REMARKS
FL	12	FORSYTHIA INTERMEDIA "LYNWOOD GOLD"	LYNWOOD GOLD FORSYTHIA	36" HT.	
PD	15	PHYSOCARPUS OPULIFOLIUS "MONLO"	DIABOLO NINEBARK	36" HT.	
PG	23	PICEA GLAUCA	WHITE SPRUCE	6' HT.	FULL TO GROUND
PP	28	PICEA PUNGENS	COLORADO SPRUCE	6' HT.	FULL TO GROUND



SHRUB PLANTING DETAIL
NO SCALE



TREE PLANTING DETAIL
NO SCALE



- LEGEND**
- UTILITY POLE
 - GUY WIRE
 - SIGN
 - BOLLARD
 - LIGHT POLE
 - SANITARY SEWER MANHOLE
 - GAS LINE MARKER
 - DRAINAGE INLET
 - HAND HOLE BOX
 - VALVE BOX
 - SPOT ELEVATION
 - SANITARY SEWER LINE
 - STORM SEWER LINE
 - GAS LINE
 - OVERHEAD ELECTRIC LINE(S)
 - WATER LINE
 - EXISTING CONTOUR
 - PROPOSED MILLINGS FOR PARKING LOT (SEE DETAIL, SHEET 6)
 - PROPOSED CONTOUR

Nussbaumer & Clarke, Inc.
ENGINEERS AND SURVEYORS
3656 Lake Shore Road, Suite 500 | Buffalo, NY 14219
(716) 827-8000 | (716) 826-7858 fax
www.nussbaumer.com
Erie | Niagara | Chautauque | Cattaraugus

PROPOSED STORAGE PARKING LOT
WEST HERR, LLC
591 OLEAN ROAD, EAST AURORA, NEW YORK
LIGHTING AND LANDSCAPE PLAN

NO.	REVISIONS	DESCRIPTION	DATE

NUSSBAUMER & CLARKE, INC.
A CORPORATION REGISTERED TO
PRACTICE PROFESSIONAL ENGINEERING
& LAND SURVEYING IN THE
STATE OF NEW YORK
CERTIFICATE No. _____

PROGRESS PRINT
NOT FOR CONSTRUCTION

UNAUTHORIZED ALTERATION OR
ADDITION TO THIS ENGINEERING
DRAWING IS A VIOLATION OF
SECTION 2209, PROVISION 2 OF THE
NEW YORK STATE EDUCATION LAW.

PROJECT NUMBER	14J5-0047
DATE	05-28-15
DRAWN BY	TJB
DESIGNED BY	AHG
CHECKED BY	RP
APPROVED BY	--
SCALE	1" = 50'
DRAWING No.	7 OF 7

A: Land Development\14J5-0047 - West Herr EA - Driving Range Drawings\Design Drawings\14J5-0047 SITE PLAN.dwg 5/28/2015 10:01:16 AM