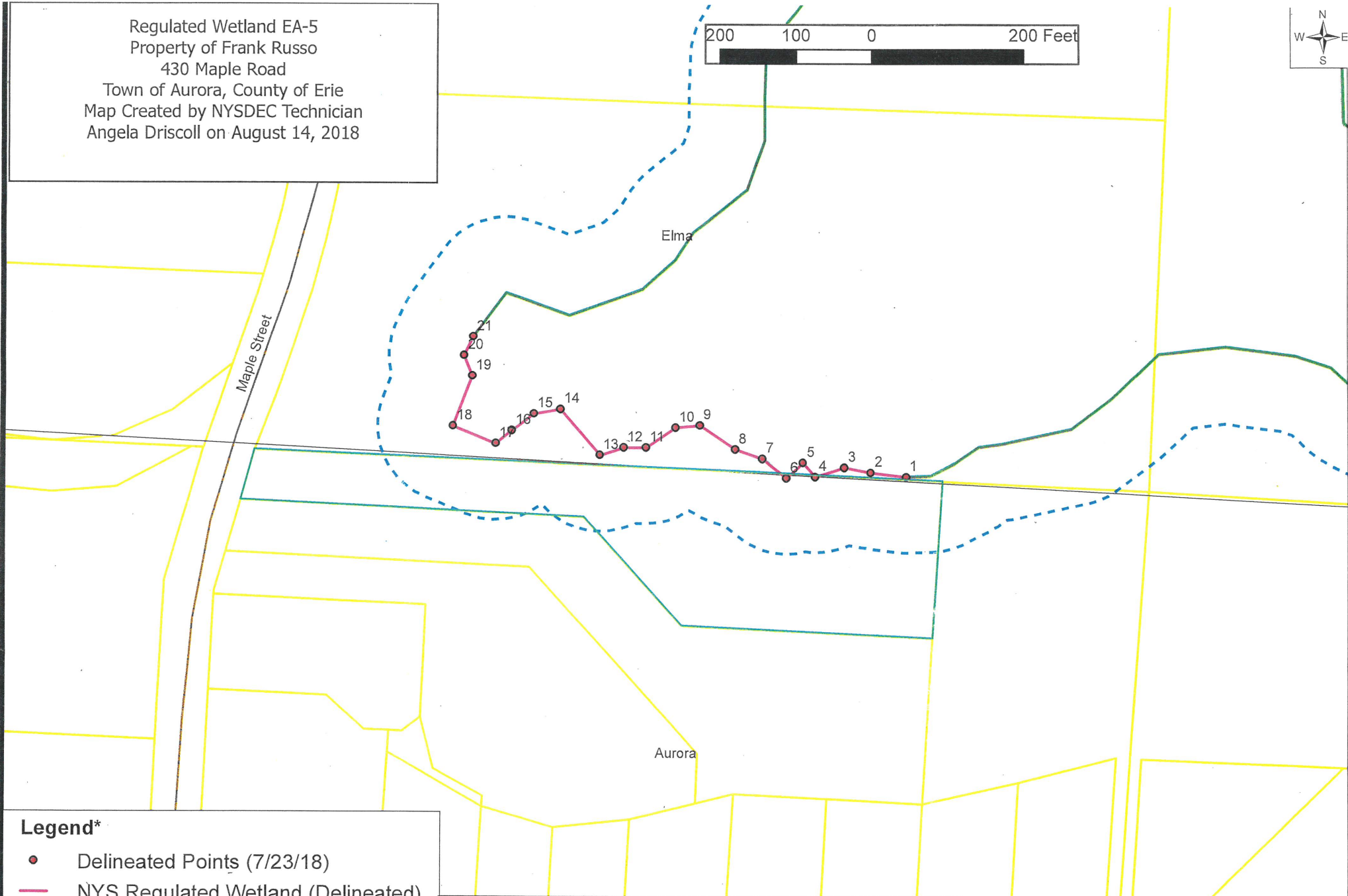
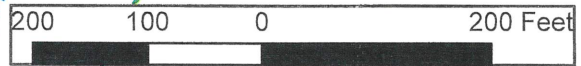


Regulated Wetland EA-5  
 Property of Frank Russo  
 430 Maple Road  
 Town of Aurora, County of Erie  
 Map Created by NYSDEC Technician  
 Angela Driscoll on August 14, 2018



- Legend\***
- Delineated Points (7/23/18)
  - NYS Regulated Wetland (Delineated)
  - NYS Regulated Wetland (Estimated)
  - - - Regulated 100-foot Adjacent Area
  - Tax Parcels - Erie County
  - NYS Streets and Highways

*\*Locations of flags were recorded with a hand-held Global Positioning System and, therefore, are not survey-accurate. For precise locations of the boundaries, look at the flags on the property or have the flags surveyed relative to the property boundary. It is your responsibility to measure the regulated 100-foot adjacent area. Note that wetland boundaries may change over time and this map does not fix the wetland boundary indefinitely. NYSDEC staff can delineate the boundary again in the future upon your request.*

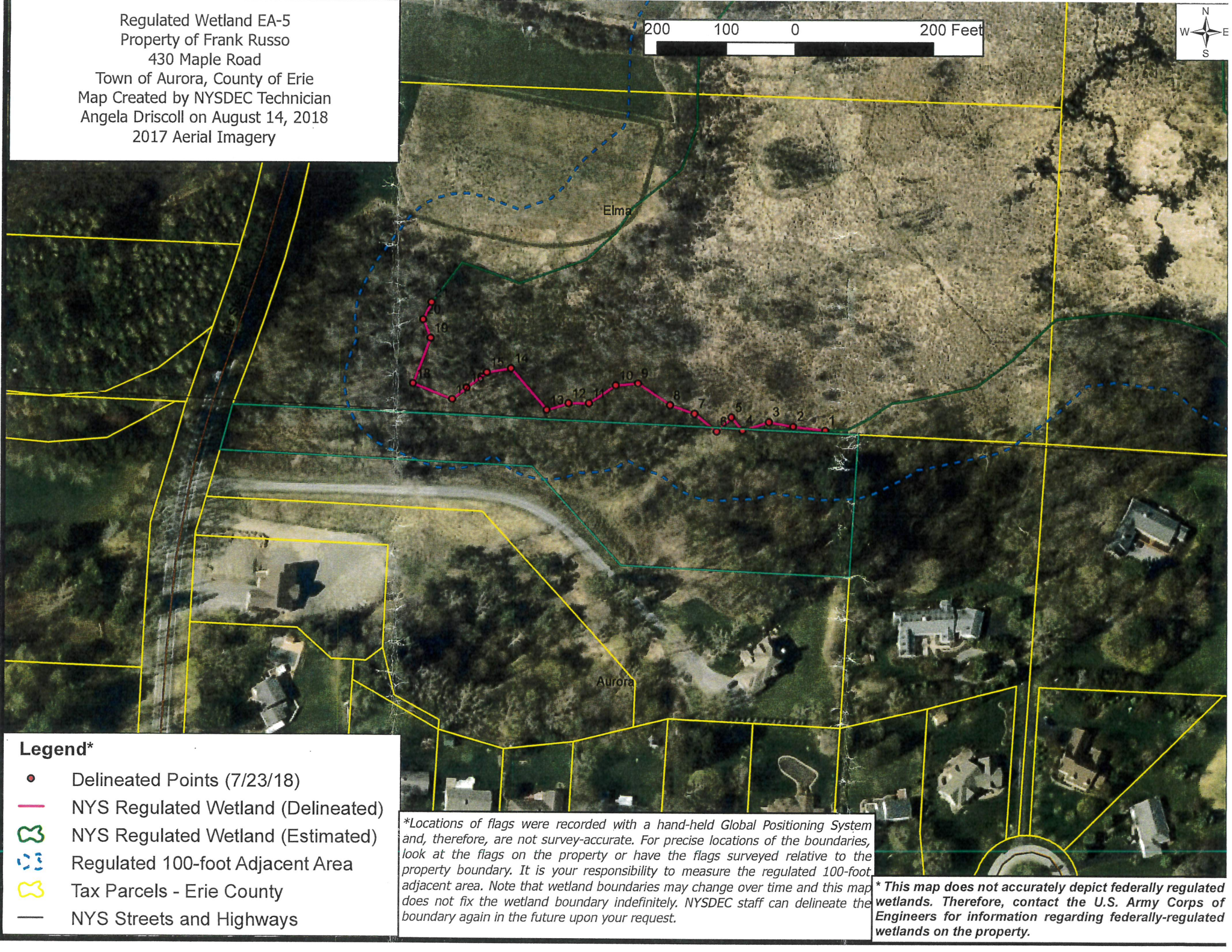
**\* This map does not accurately depict federally regulated wetlands. Therefore, contact the U.S. Army Corps of Engineers for information regarding federally-regulated wetlands on the property.**



Regulated Wetland EA-5  
Property of Frank Russo  
430 Maple Road

Town of Aurora, County of Erie  
Map Created by NYSDEC Technician  
Angela Driscoll on August 14, 2018  
2017 Aerial Imagery

200 100 0 200 Feet



**Legend\***

- Delineated Points (7/23/18)
- NYS Regulated Wetland (Delineated)
- NYS Regulated Wetland (Estimated)
- - - Regulated 100-foot Adjacent Area
- Tax Parcels - Erie County
- NYS Streets and Highways

*\*Locations of flags were recorded with a hand-held Global Positioning System and, therefore, are not survey-accurate. For precise locations of the boundaries, look at the flags on the property or have the flags surveyed relative to the property boundary. It is your responsibility to measure the regulated 100-foot adjacent area. Note that wetland boundaries may change over time and this map does not fix the wetland boundary indefinitely. NYSDEC staff can delineate the boundary again in the future upon your request.*

**\*This map does not accurately depict federally regulated wetlands. Therefore, contact the U.S. Army Corps of Engineers for information regarding federally-regulated wetlands on the property.**