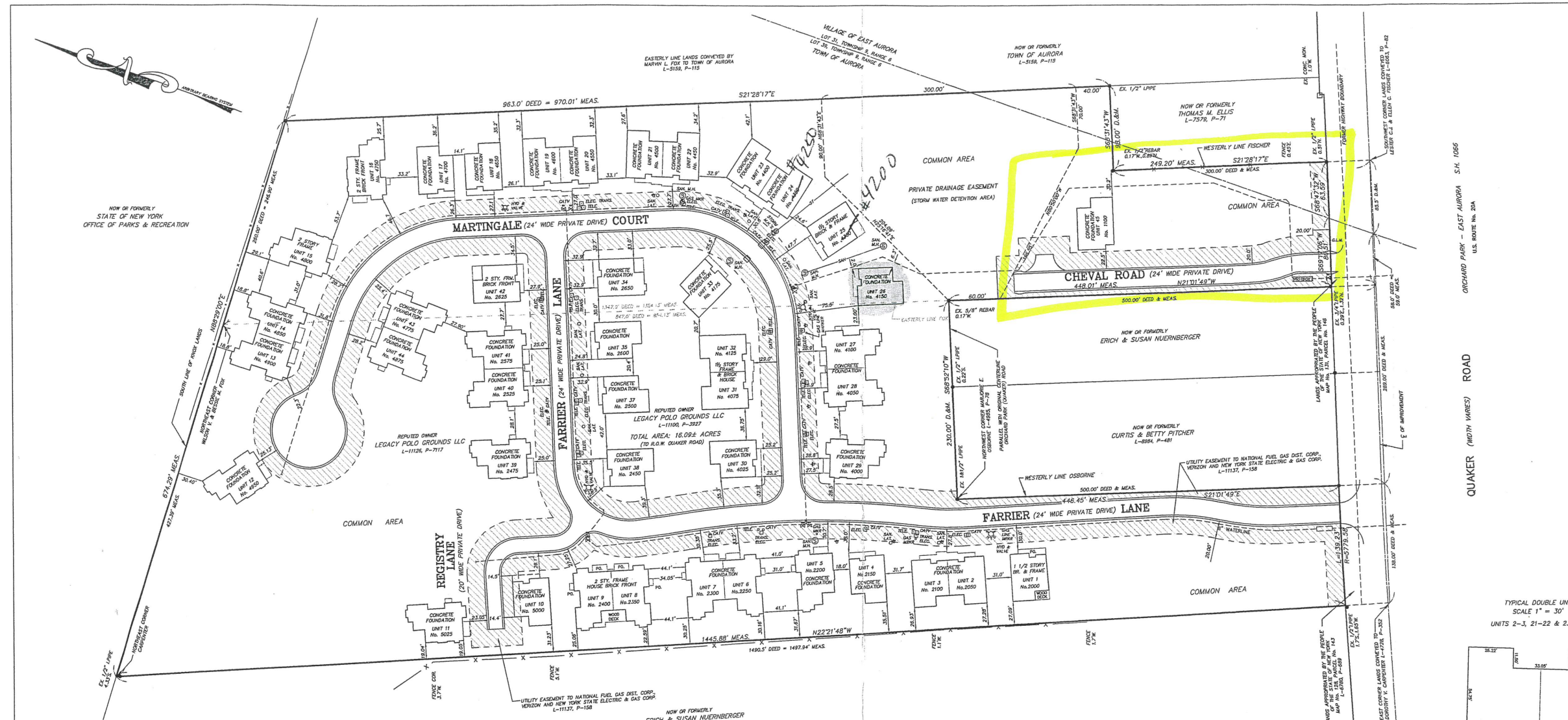
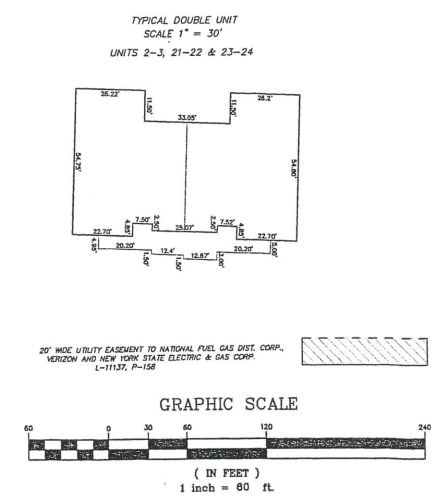
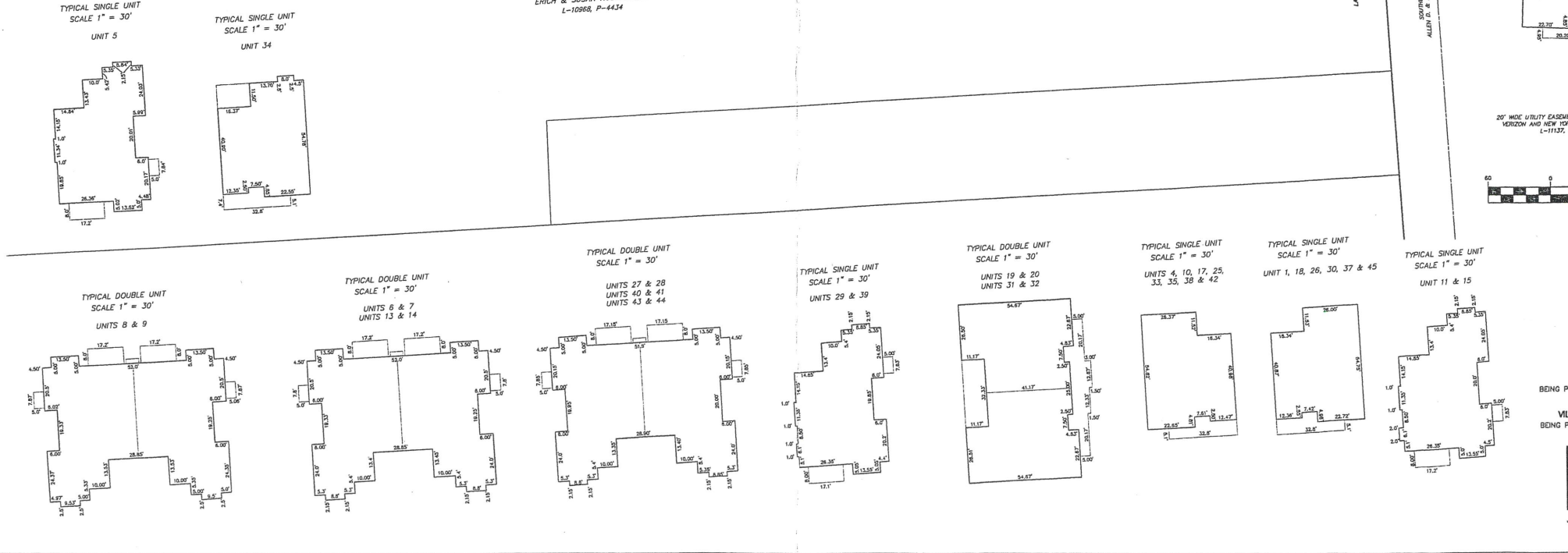


4150 Foundation

NOTE: UNAUTHORIZED ALTERATION OR ADDITION TO THIS DOCUMENT IS A VIOLATION OF SECTION 7209 PROVISION 2 OF THE NEW YORK STATE EDUCATION LAW.
NOTE: THIS SURVEY WAS PREPARED WITHOUT THE BENEFIT OF AN ABSTRACT OF TITLE.
* SET ON EX. 5/8" REBAR



DATE	REVISION/TYPE
11/16/17	FOUNDATION LOCATION UNIT 26
6/24/17	HOUSE LOCATION UNIT 25
6/24/17	FOUNDATION LOCATION UNIT 45
1/23/17	FOUNDATION LOCATION UNIT 34
8/11/16	FOUNDATION LOCATION UNITS 23 & 24
6/27/16	FOUNDATION LOCATION UNIT 37
1/12/15	FOUNDATION LOCATION UNIT 33
10/16/14	FOUNDATION LOCATION UNITS 27 & 28
10/16/14	FOUNDATION LOCATION UNIT 35
7/11/14	FOUNDATION LOCATION UNITS 2 & 3
4/8/14	FOUNDATION LOCATION UNITS 21 & 22
12/13/13	FOUNDATION LOCATION UNIT 4
10/8/13	FOUNDATION LOCATION UNIT 5
7/30/13	LOCATE UTILITIES
7/30/13	FOUNDATION LOCATION UNIT 17
2/19/13	FOUNDATION LOCATION UNIT 38
1/21/13	FOUNDATION LOCATION UNIT 18
6/19/12	HOUSE LOCATION UNIT 15
5/4/12	HOUSE LOCATION UNITS 31 & 32
11/30/11	FOUNDATION LOCATION UNIT 30
11/7/11	HOUSE LOCATION UNIT 1
8/3/11	FOUNDATION LOCATION UNIT 10
6/17/11	FOUNDATION LOCATION UNIT 29
4/25/11	FOUNDATION LOCATION UNIT 11
12/13/10	HOUSE LOCATION UNIT 42
12/1/10	FOUNDATION LOCATION UNITS 19/20 & 39
10/14/09	FOUNDATION LOCATION UNITS 43 & 44
10/12/09	FOUNDATION LOCATION UNITS 40 & 41
6/5/09	FOUNDATION LOCATION UNITS 6 & 7
4/22/09	HOUSE LOCATION UNIT 16
2/4/09	FOUNDATION LOCATION UNITS 13 & 14
1/22/09	FOUNDATION LOCATION UNIT 12
10/29/08	HOUSE LOCATION UNITS 8 & 9



SURVEY OF
Polo Grounds Condominium
MAP COVER 3688
TOWN OF AURORA, ERIE COUNTY, NEW YORK
BEING PART OF LOT 39, TOWNSHIP 9, RANGE 6, HOLLAND LAND SURVEY
AND
VILLAGE OF EAST AURORA, ERIE COUNTY, NEW YORK
BEING PART OF LOT 31, TOWNSHIP 9, RANGE 6, HOLLAND LAND SURVEY

GPI ENGINEERING, LANDSCAPE ARCHITECTURE & SURVEYING, LLP
ENGINEERING - SURVEYING - LANDSCAPE ARCHITECTURE
480 BRIDGE STREET, SUITE 400
BUFFALO, NEW YORK 14203
(716) 633-1844 FAX 633-6940

JOB No. 3520 DATE: JANUARY 4, 2008

4150