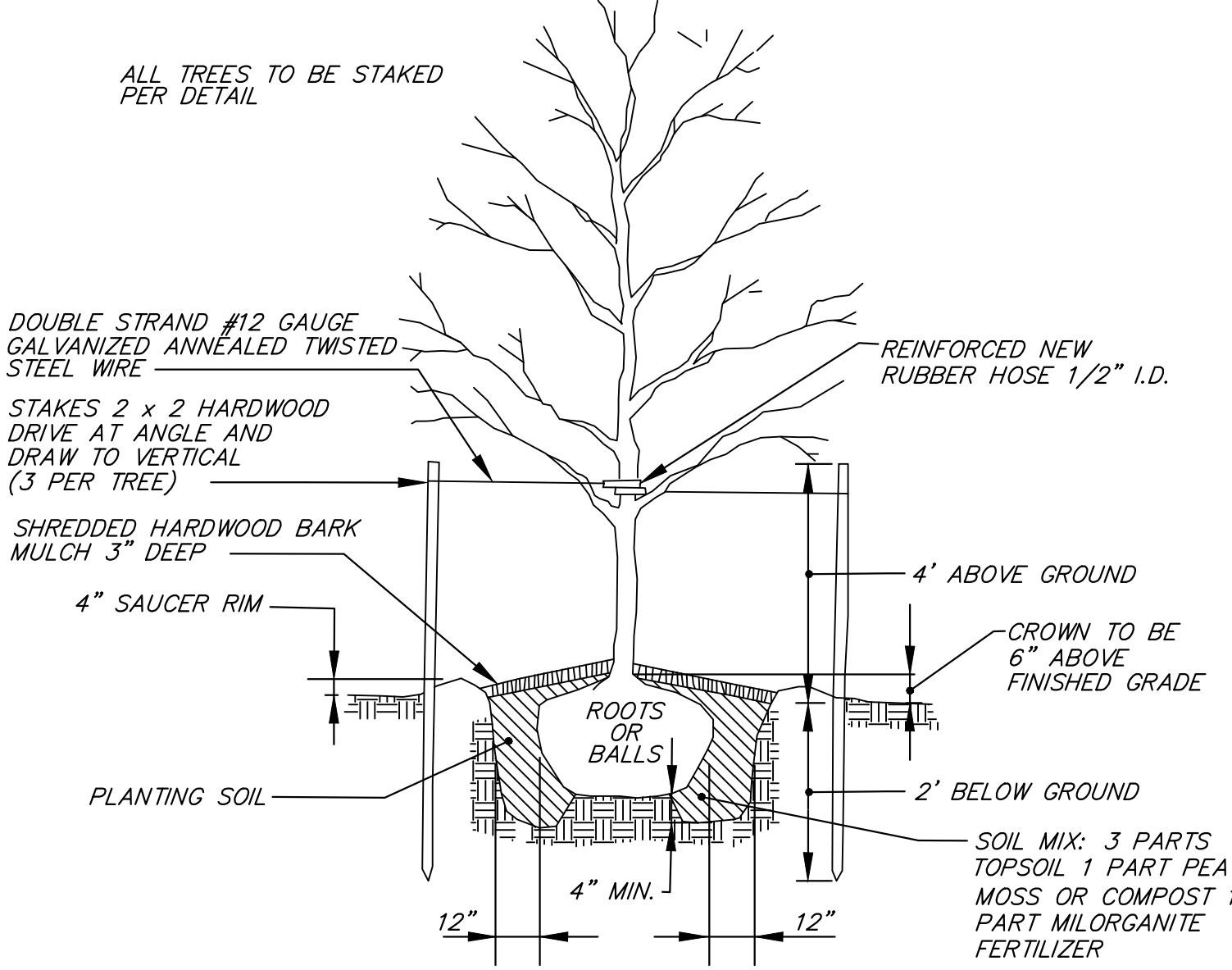
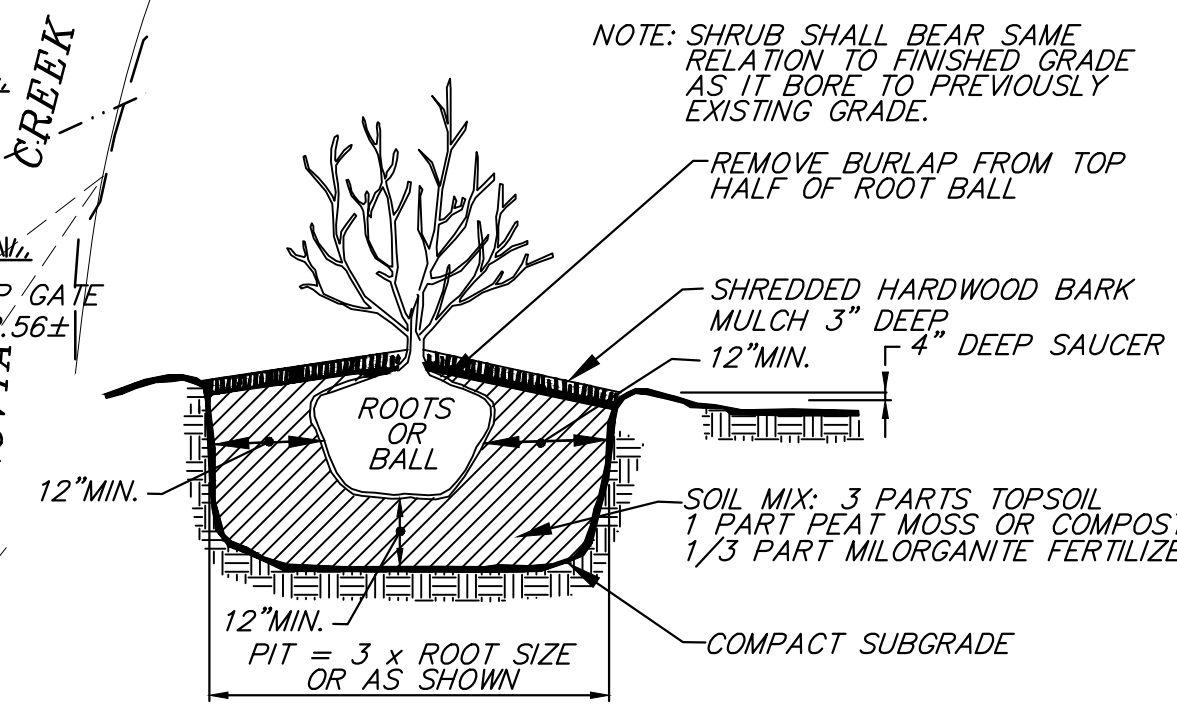
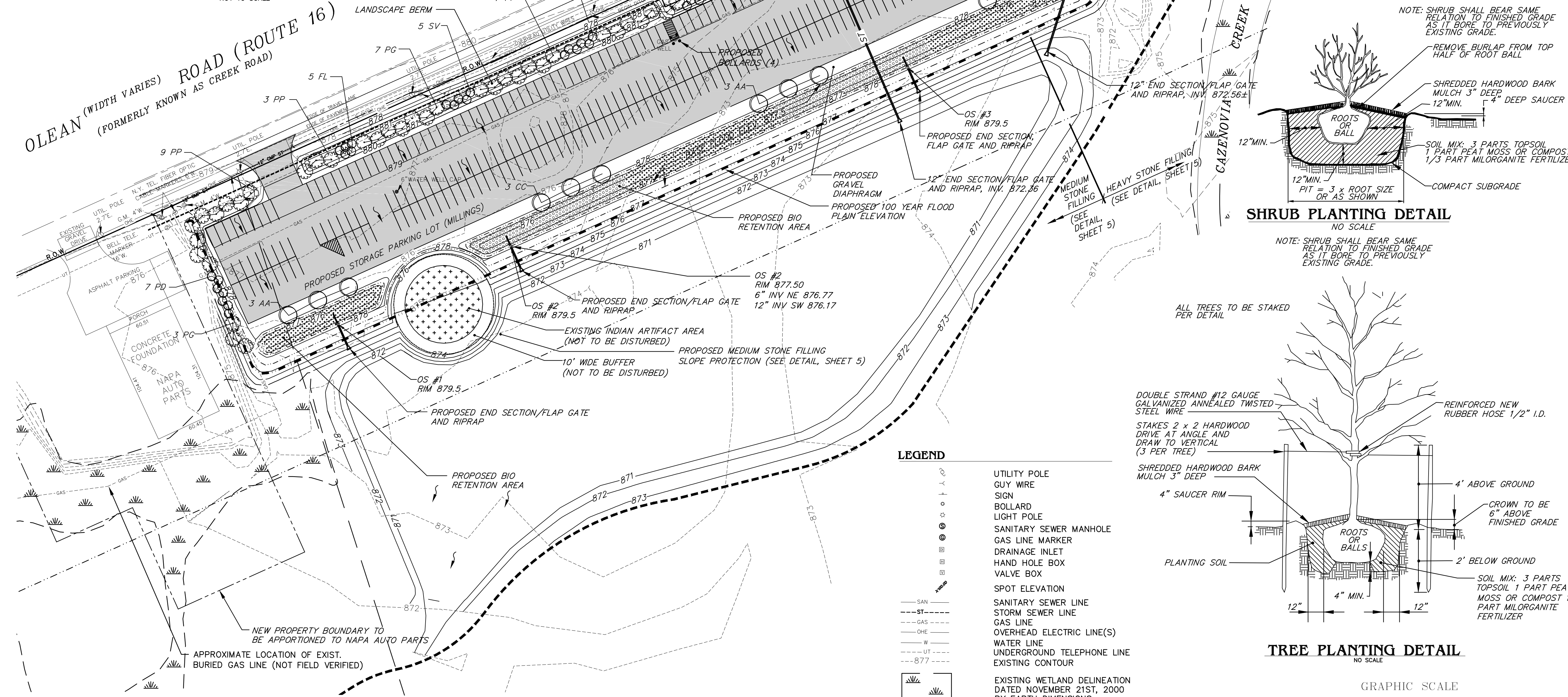
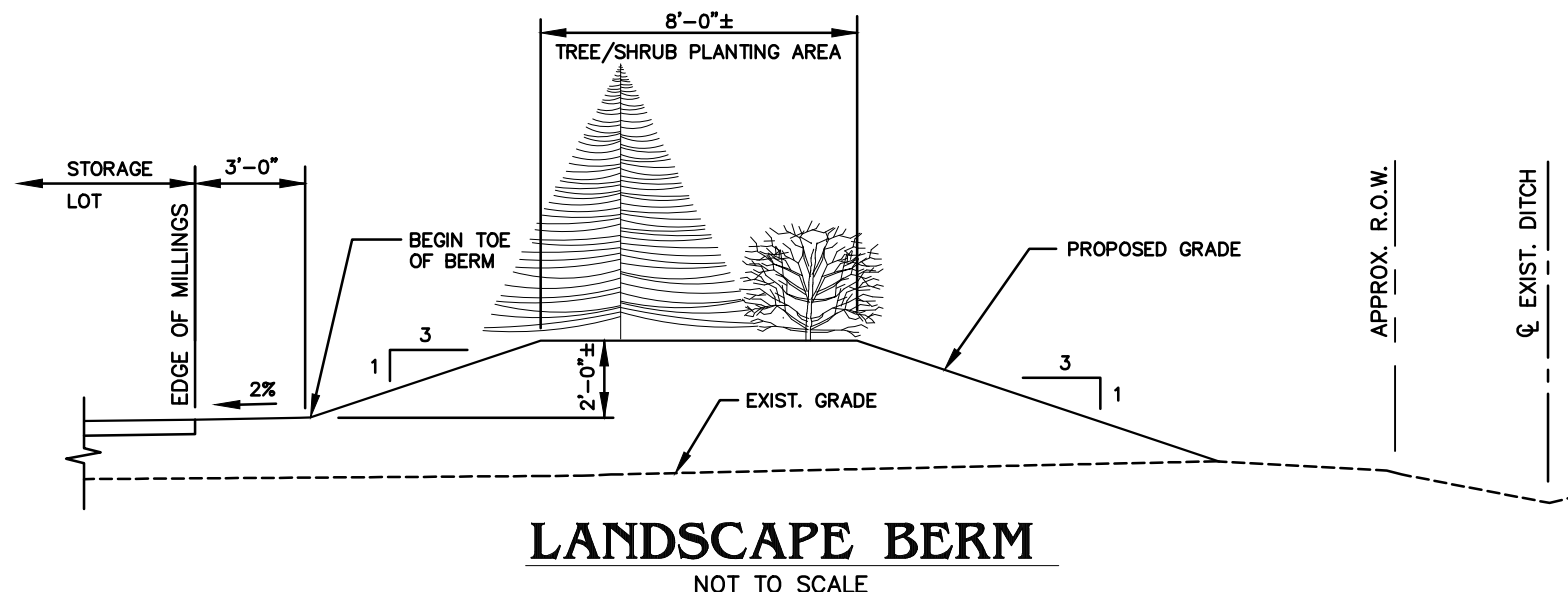
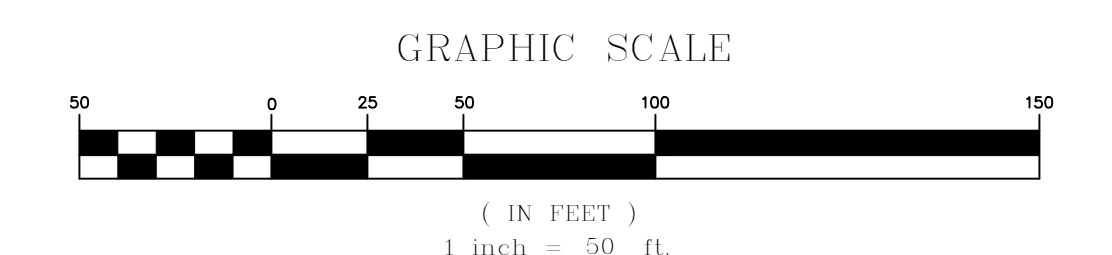


PLANT LISTING					
KEY	QTY.	BOTANICAL NAME	COMMON NAME	MIN. SIZE	REMARKS
AA	9	AMELANCHIER GRANDIFLORA "AUTUMN BRILLIANCE"	AUTUMN BRILLIANCE SERVICEBERRY	2 1/2" CAL.	
CC	6	CARPINUS CAROLINIANA	AMERICAN HORNBEAM	2 1/2" CAL.	NOT PYRAMIDAL FORM
FL	11	FORSYTHIA INTERMEDIA "LYNWOOD GOLD"	LYNWOOD GOLD FORSYTHIA	36" HT.	
PD	18	PHYSOCARPUS OPULIFOLIUS "MONLO"	DIABOLO NINEBARK	36" HT.	
PG	34	PICEA GLAUCA	WHITE SPRUCE	6' HT.	FULL TO GROUND
PP	38	PICEA PUNGENS	COLORADO SPRUCE	6' HT.	FULL TO GROUND
SS	11	SYMPHORICARPOS ALBUS	COMMON SNOWBERRY	36" HT.	
SV	11	SPIRAEA VANHOUTTEI	VAN HOUTTE SPIREA	36" HT.	
VD	12	VIBURNUM DENTATUM	ARROWWOOD VIBURNUM	36" HT.	
PC	760	PONTERDERIA CORDATA	PICKEREL WEED	2" PLUG	4' O.C.
CL	555	CALAMAGROSTIS CANADENSIS	BLUE JOINT REED GRASS	2" PLUG	4' O.C.



- LEGEND**
- UTILITY POLE
  - GUY WIRE
  - SIGN
  - BOLLARD
  - LIGHT POLE
  - SANITARY SEWER MANHOLE
  - GAS LINE MARKER
  - DRAINAGE INLET
  - HAND HOLE BOX
  - VALVE BOX
  - SPOT ELEVATION
  - SANITARY SEWER LINE
  - STORM SEWER LINE
  - GAS LINE
  - OVERHEAD ELECTRIC LINE(S)
  - WATER LINE
  - UNDERGROUND TELEPHONE LINE
  - EXISTING CONTOUR
  - EXISTING WETLAND DELINEATION DATED NOVEMBER 21ST, 2000 BY EARTH DIMENSIONS
  - PROPOSED MILLINGS FOR PARKING LOT (SEE DETAIL, SHEET 6)
  - PROPOSED CONTOUR



**Nussbaumer & Clarke, Inc.**  
ENGINEERS AND SURVEYORS

3556 Lake Shore Road, Suite 500 | Buffalo, NY 14219  
(716) 827-5000 | (716) 826-9565 fax  
www.nussbaumer.com  
Erie | Niagara | Chautauque | Cattaraugus

**PROPOSED STORAGE PARKING LOT**  
WEST HERR PROPERTIES EA, LLC  
591 OLEAN ROAD, AURORA, NEW YORK

**LANDSCAPE PLAN**

REVISIONS	DESCRIPTION	DATE
No. 1	MISC. EDITS	03-22-16

**NUSSBAUMER & CLARKE, INC.**  
A CORPORATION REGISTERED TO PRACTICE PROFESSIONAL ENGINEERING & LAND SURVEYING IN THE STATE OF NEW YORK

CERTIFICATE No. \_\_\_\_\_

UNAUTHORIZED ALTERATION OR ADDITION TO THIS ENGINEERING DRAWING IS A VIOLATION OF SECTION 7209, PROVISION 2 OF THE NEW YORK STATE EDUCATION LAW.

PROJECT NUMBER 14J5-0047  
DATE 02-12-16  
DRAWN BY TJB  
DESIGNED BY AHG  
CHECKED BY MB  
APPROVED BY MAN  
SCALE 1" = 50'  
DRAWING No. 7 OF 8

H:\Land Development\14J5-0047 - West Herr EA - Driving Range Drawings\14J5-0047 SITE PLAN.dwg 3/23/2016 TBOYLE